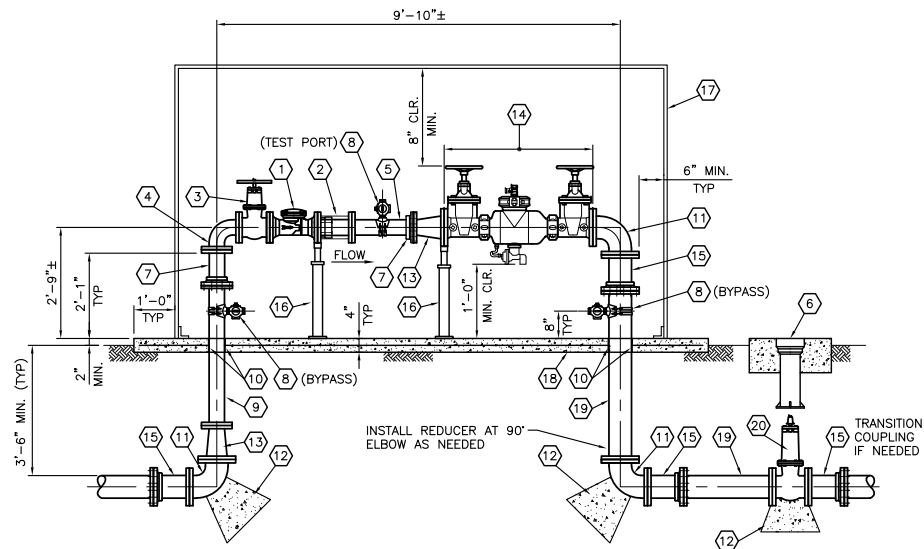


PLAN



ELEVATION

4' METER WITH 6' WILKINS 375AST REDUCED PRESSURE PRINCIPLE ASSEMBLY

SCALE: 1/2" = 1'-0"

(USE NRS GATE VALVES ONLY)

BF1-5

042722

DESIGNER/ENGINEER NOTES:

1. PRIOR TO SELECTION OF METER/BACKFLOW ASSEMBLY DETAIL ENGINEER TO VERIFY EXISTING METER AND BACKFLOW CAPACITY, FIRE FLOW AND EXISTING PRESSURE AT THE ASSEMBLY INSTALLATION LOCATION.
2. BASED ON RESEARCH RESULTS, IF MORE THAN ONE STANDARD METER/BACKFLOW ASSEMBLIES OR MANUFACTURERS MAY BE UTILIZED THEN ALL APPLICABLE DETAILS ARE TO BE SHOWN ON THE DRAWINGS FOR CONTRACTOR SELECTION.
3. ALL ASSEMBLY PIPING, CONNECTIONS AND EASEMENT SIZES TO ACCOMMODATE THE LARGEST LAYOUT OPTION REGARDLESS OF CONTRACTOR SELECTION TO AVOID CONFLICTS DURING CONSTRUCTION.

REMOVE THESE NOTES WHEN DETAIL USED

INSTALLATION NOTES:

1. CONTRACTOR SHALL BE RESPONSIBLE FOR REPLACING ANY AND ALL DAMAGED OR DISTURBED EXISTING LANDSCAPING AND IRRIGATION FACILITIES, IN AND ADJACENT TO PROJECT SITE, DURING CONSTRUCTION OPERATIONS.
2. CONTRACTOR TO HAVE NEVADA LICENSED PROFESSIONAL LAND SURVEYOR LOCATE LVWD EASEMENT PRIOR TO CONSTRUCTION.
3. CONTRACTOR TO LOCATE ONSITE PIPING AND CONFIRM DIAMETER, PIPE DEPTH, AND PIPE MATERIAL PRIOR TO ORDERING MATERIAL AND INSTALLATION.
4. CONTRACTOR TO VERIFY DIMENSIONS OF CABINET BASED ON INSTALLED DIMENSIONS OF PIPE AND FITTINGS PRIOR TO FABRICATION.
5. CONTRACTOR TO INSTALL VALVE LOCK DEVICE WITH DISTRICT PROVIDED LOCK (AS REQUIRED).
6. APPROVED EQUAL MATERIALS CAN BE FOUND ON THE LVWD APPROVED PRODUCTS LIST.
7. 12" MIN CLEARANCE IS REQUIRED FROM THE RELIEF VALVE TO ASSEMBLY PAD. ASSEMBLY PAD FINISHED GRADE MUST BE AT OR ABOVE HIGH-WATER LEVEL OF SURROUNDING AREA.
8. TEST PORT OUTLET LOCATION TO BE A MINIMUM OF TWO (2) PIPE DIAMETERS DOWNSTREAM THE WATER METER FLANGE.
9. BYPASS OUTLETS TO BE ROTATED 15° AND ARE ONLY REQUIRED ON NON-LOOPE SERVICES.

MATERIAL LIST

- | | |
|--|--|
| ① 4" WATER METER (LVWD FURNISHED) | ⑫ CONCRETE THRUST/ANCHOR BLOCK |
| ② 4" RESTRAINED DISMANTLING JOINT | ⑬ 6" x 4" FLG REDUCER |
| ③ 4" FLG GATE VALVE WITH HANDWHEEL | ⑭ 6" WILKINS 375AST REDUCED PRESSURE PRINCIPLE (RPPA) BACKFLOW ASSEMBLY OR APPROVED EQUAL (NOTE 6) |
| ④ 4" FLG 90° BEND | ⑮ 6" ADAPTER FLANGE (RESTRAINED) |
| ⑤ 4" FLG x PE DUCTILE IRON PIPE (CUT TO FIT) | ⑯ ADJUSTABLE PIPE SUPPORT |
| ⑥ VALVE BOX AND COLLAR (NOTE 5) | ⑰ APPROVED ENCLOSURE WITH 4 DOORS (CONTRACTOR TO SUBMIT SHOP DRAWINGS) |
| ⑦ 4" ADAPTER FLANGE (RESTRAINED) | ⑱ CONCRETE PAD WITH WELDED WIRE FABRIC, 4 x 4 - W1.4 x W1.4 |
| ⑧ 2" SERVICE SADDLE AND 2" CORP STOP (SEE NOTES 8 & 9) | ⑲ 6" FLG x PE DUCTILE IRON PIPE (CUT TO FIT) |
| ⑨ 4" FLG x PE DUCTILE IRON PIPE (CUT TO FIT) | ⑳ 6" FLG GATE VALVE |
| ⑩ 1/2" EXPANSION JOINT MATERIAL | |
| ⑪ 6" FLG 90° BEND | |