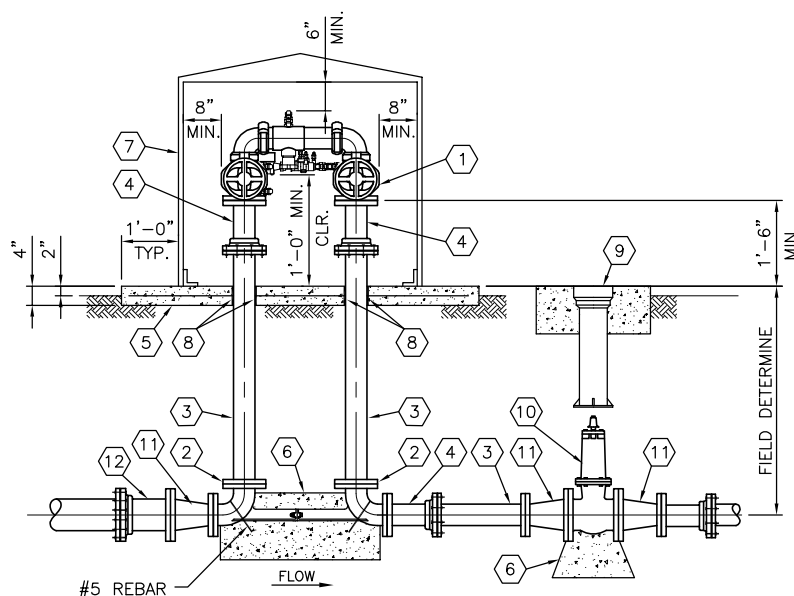


PLAN



SECTION A

DESIGNER/ENGINEER NOTES:

1. PRIOR TO SELECTION OF METER/BACKFLOW ASSEMBLY DETAIL ENGINEER TO VERIFY EXISTING METER AND BACKFLOW CAPACITY, FIRE FLOW AND EXISTING PRESSURE AT THE ASSEMBLY INSTALLATION LOCATION.
2. BASED ON RESEARCH RESULTS, IF MORE THAN ONE STANDARD METER/BACKFLOW ASSEMBLIES OR MANUFACTURERS MAY BE UTILIZED THEN ALL APPLICABLE DETAILS ARE TO BE SHOWN ON THE DRAWINGS FOR CONTRACTOR SELECTION.
3. ALL ASSEMBLY PIPING, CONNECTIONS AND EASEMENT SIZES TO ACCOMMODATE THE LARGEST LAYOUT OPTION REGARDLESS OF CONTRACTOR SELECTION TO AVOID CONFLICTS DURING CONSTRUCTION.

REMOVE THESE NOTES WHEN DETAIL USED

MATERIAL LIST

- 1 4" AMES COLT 500N REDUCED PRESSURE DETECTOR (RPDA) BACKFLOW ASSEMBLY OR APPROVED EQUAL (NOTE 2)
- 2 PIPE SETTER, 90° FLG BEND
- 3 4" FLG x PE DUCTILE IRON PIPE, PC 350 (CUT TO FIT)
- 4 4" ADAPTER FLANGE (RESTRAINED)
- 5 CONCRETE SLAB (4" THK) WITH WELDED WIRE FABRIC, 4 x 4 - W1.4 x W1.4
- 6 CONCRETE THRUST/ANCHOR BLOCK
- 7 APPROVED ENCLOSURE (CONTRACTOR TO SUBMIT SHOP DRAWINGS)
- 8 1/2" EXPANSION JOINT MATERIAL
- 9 VALVE BOX AND COLLAR (NOTE 1)
- 10 6" FLG GATE VALVE
- 11 6" x 4" FLG REDUCER
- 12 6" ADAPTER FLANGE (RESTRAINED)

NOTES:

1. CONTRACTOR TO INSTALL VALVE LOCK DEVICE WITH DISTRICT PROVIDED LOCK (AS REQUIRED).
2. APPROVED EQUAL MATERIALS CAN BE FOUND ON THE LVWD APPROVED PRODUCTS LIST.
3. 12" MIN CLEARANCE IS REQUIRED FROM THE RELIEF VALVE TO ASSEMBLY PAD. ASSEMBLY PAD FINISHED GRADE MUST BE AT OR ABOVE HIGH-WATER LEVEL OF SURROUNDING AREA.

4" COLT 500N REDUCED PRESSURE DETECTOR ASSEMBLY

SCALE: 1/2" = 1'-0"

(USE NRS GATE VALVES ONLY)

BF1-2

040121