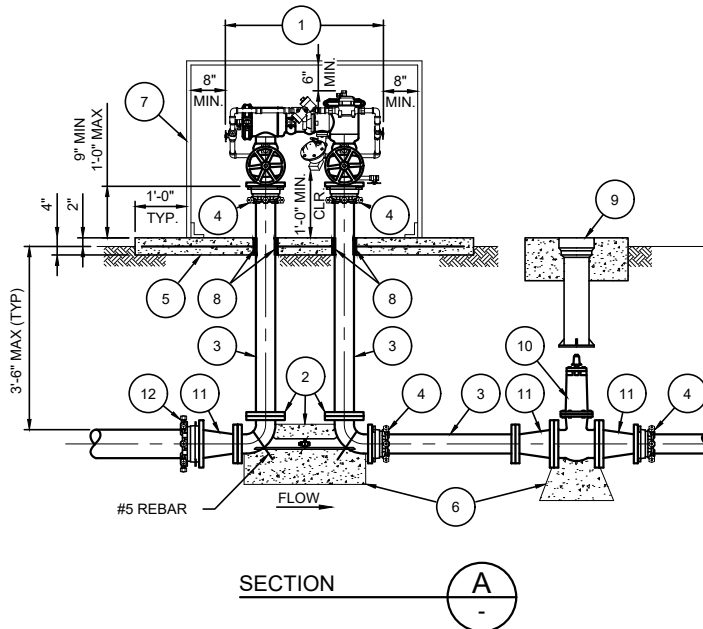


PLAN



SECTION



DESIGNER/ENGINEER NOTES:

1. PRIOR TO SELECTION OF METER/BACKFLOW ASSEMBLY DETAIL ENGINEER TO VERIFY EXISTING METER AND BACKFLOW CAPACITY, FIRE FLOW AND EXISTING PRESSURE AT THE ASSEMBLY INSTALLATION LOCATION.
2. BASED ON RESEARCH RESULTS, IF MORE THAN ONE STANDARD METER/BACKFLOW ASSEMBLIES OR MANUFACTURERS MAY BE UTILIZED THEN ALL APPLICABLE DETAILS ARE TO BE SHOWN ON THE DRAWINGS FOR CONTRACTOR SELECTION.
3. ALL ASSEMBLY PIPING, CONNECTIONS AND EASEMENT SIZES TO ACCOMMODATE THE LARGEST LAYOUT OPTION REGARDLESS OF CONTRACTOR SELECTION TO AVOID CONFLICTS DURING CONSTRUCTION.

REMOVE THESE NOTES WHEN DETAIL USED

MATERIAL LIST

NO.	DESCRIPTION
1	4" WILKINS 475 STDAR REDUCED PRESSURE DETECTOR (RPDA) BACKFLOW ASSEMBLY OR APPROVED EQUAL (NOTE 2)
2	PIPE SETTER, 90° FLG BEND
3	4" FLG x PE DUCTILE IRON PIPE, PC 350 (CUT TO FIT)
4	4" ADAPTER FLANGE (RESTRAINED)
5	CONCRETE PAD WITH WELDED WIRE FABRIC, 4 x 4 - W1.4 x W1.4
6	CONCRETE THRUST/ANCHOR BLOCK
7	APPROVED ENCLOSURE (CONTRACTOR TO SUBMIT SHOP DRAWINGS)
8	1/2" EXPANSION JOINT MATERIAL
9	VALVE BOX AND COLLAR (NOTE 1)
10	6" FLG GATE VALVE
11	6" x 4" FLG REDUCER
12	6" ADAPTER FLANGE (RESTRAINED)

INSTALLATION NOTES:

1. CONTRACTOR TO INSTALL VALVE LOCK DEVICE WITH DISTRICT PROVIDED LOCK (AS REQUIRED).
2. APPROVED EQUAL MATERIALS CAN BE FOUND ON THE LVVWD APPROVED PRODUCTS LIST.
3. 1'-0" MIN CLEARANCE IS REQUIRED FROM THE RELIEF VALVE TO ASSEMBLY PAD. ASSEMBLY PAD FINISHED GRADE MUST BE AT OR ABOVE HIGH-WATER LEVEL OF SURROUNDING AREA.

4" WILKINS 475STDAR REDUCED PRESSURE DETECTOR ASSEMBLY

SCALE: 1/2" = 1'-0"

(USE NRS GATE VALVES ONLY)

BF01-6 030125

