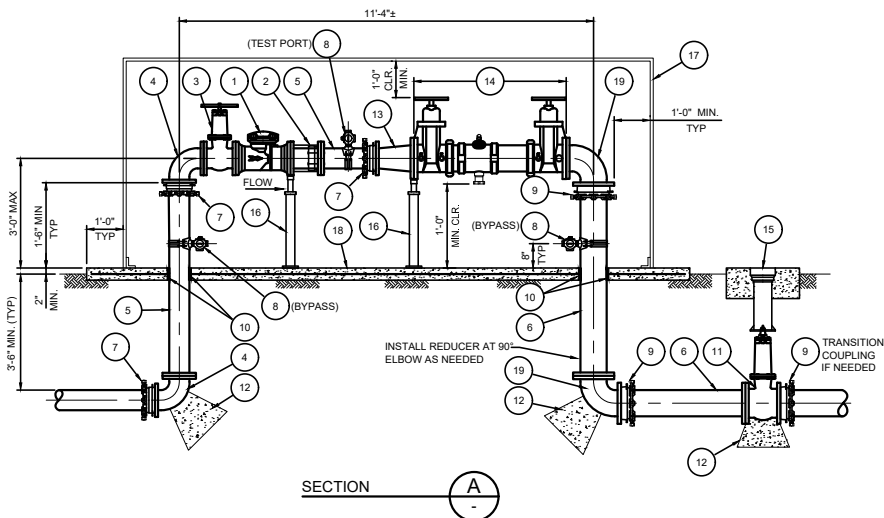


PLAN



SECTION



6" METER WITH 8" COLT 400 REDUCED PRESSURE PRINCIPLE ASSEMBLY

SCALE: 1/2" = 1'-0"

(USE NRS GATE VALVES ONLY)

DESIGNER/ENGINEER NOTES:

1. PRIOR TO SELECTION OF METER/BACKFLOW ASSEMBLY DETAIL ENGINEER TO VERIFY EXISTING METER AND BACKFLOW CAPACITY, FIRE FLOW AND EXISTING PRESSURE AT THE ASSEMBLY INSTALLATION LOCATION.
2. BASED ON RESEARCH RESULTS, IF MORE THAN ONE STANDARD METER/BACKFLOW ASSEMBLY OR MANUFACTURERS MAY BE UTILIZED THEN ALL APPLICABLE DETAILS ARE TO BE SHOWN ON THE DRAWINGS FOR CONTRACTOR SELECTION.
3. ALL ASSEMBLY PIPING, CONNECTIONS AND EASEMENT SIZES TO ACCOMMODATE THE LARGEST LAYOUT OPTION REGARDLESS OF CONTRACTOR SELECTION TO AVOID CONFLICTS DURING CONSTRUCTION.

REMOVE THESE NOTES WHEN DETAIL USED

INSTALLATION NOTES:

1. CONTRACTOR SHALL BE RESPONSIBLE FOR REPLACING ANY AND ALL DAMAGED OR DISTURBED EXISTING LANDSCAPING AND IRRIGATION FACILITIES, IN AND ADJACENT TO PROJECT SITE, DURING CONSTRUCTION OPERATIONS.
2. CONTRACTOR TO HAVE NEVADA LICENSED PROFESSIONAL LAND SURVEYOR LOCATE LVVWD EASEMENT PRIOR TO CONSTRUCTION.
3. CONTRACTOR TO LOCATE ONSITE PIPING AND CONFIRM DIAMETER, PIPE DEPTH, AND PIPE MATERIAL PRIOR TO ORDERING MATERIAL AND INSTALLATION.
4. CONTRACTOR TO VERIFY DIMENSIONS OF CABINET BASED ON INSTALLED DIMENSIONS OF PIPE AND FITTINGS PRIOR TO FABRICATION.
5. CONTRACTOR TO INSTALL VALVE LOCK DEVICE WITH DISTRICT PROVIDED LOCK (AS REQUIRED).
6. APPROVED EQUAL MATERIALS CAN BE FOUND ON THE LVVWD APPROVED PRODUCTS LIST.
7. 1'-0" MIN CLEARANCE IS REQUIRED FROM THE RELIEF VALVE TO ASSEMBLY PAD. ASSEMBLY PAD FINISHED GRADE MUST BE AT OR ABOVE HIGH-WATER LEVEL OF SURROUNDING AREA.
8. TEST PORT OUTLET LOCATION TO BE A MINIMUM OF TWO (2) PIPE DIAMETERS DOWNSTREAM THE WATER METER FLANGE.
9. BYPASS OUTLETS TO BE ROTATED 45° AND ARE ONLY REQUIRED ON NON-LOOPED SERVICES.

MATERIAL LIST

NO.	DESCRIPTION
1	6" WATER METER (LVVWD FURNISHED)
2	6" RESTRAINED DISMANTLING JOINT
3	6" FLG GATE VALVE WITH HANDWHEEL
4	6" FLG 90° BEND
5	6" FLG x PE DUCTILE IRON PIPE (CUT TO FIT)
6	8" FLG x PE DUCTILE IRON PIPE (CUT TO FIT)
7	6" ADAPTER FLANGE (RESTRAINED)
8	2" SERVICE SADDLE AND 2" CORP STOP (SEE NOTES 8 & 9)
9	8" ADAPTER FLANGE (RESTRAINED)
10	1/2" EXPANSION JOINT MATERIAL
11	8" FLG GATE VALVE
12	CONCRETE THRUST/ANCHOR BLOCK
13	8" x 6" FLG REDUCER
14	8" AMES COLT 400 REDUCED PRESSURE PRINCIPLE (RPPA) BACKFLOW ASSEMBLY OR APPROVED EQUAL (NOTE 6)
15	VALVE BOX AND COLLAR (NOTE 5)
16	ADJUSTABLE PIPE SUPPORT
17	APPROVED ENCLOSURE WITH 4 DOORS (CONTRACTOR TO SUBMIT SHOP DRAWINGS)
18	CONCRETE PAD WITH WELDED WIRE FABRIC, 4 x 4 - W1.4 x W1.4
19	8" FLG 90° BEND

BF02-5 030125