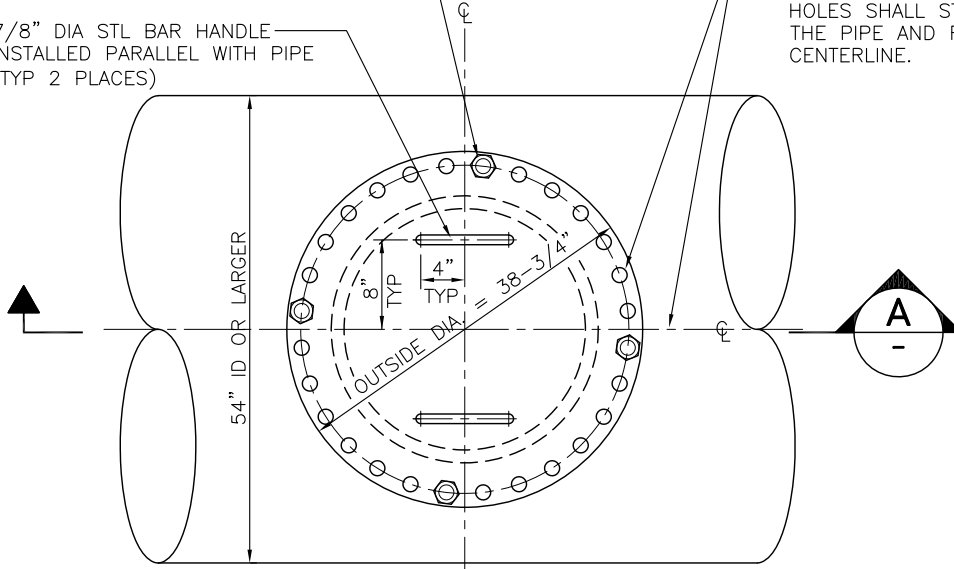


ENGINEER TO EVALUATE PROJECT PIPING
WORKING PRESSURE TO ASSURE CORRECT
PIPE FLANGE CLASS.

INSTALL 28 EA., 1-1/4", 7 UNC x 5" LONG BOLTS AND NUTS IN ACCORDANCE WITH THE SPECIFICATIONS. NUTS TO BE INSTALLED ON TOP OF BLIND FLANGE (TYP).

- DRILL 28 EA., 1-3/8" DIA
BOLT HOLES ON A BOLT
CIRCLE DIA OF 36".
HOLES SHALL STRADDLE
THE PIPE AND FLANGE
CENTERLINE.



30" BLIND FLANGE
(SEE NOTE 1)

30" BLIND FLANGE
(SEE NOTE 1)

1/8" THICK FULL
FACE RUBBER
GASKET

8"
TYP

4"
TYP

1'-6"

30" ID

1/4"

1/4"

1/4"

PIPE
CYL

MORTAR COATING

MORTAR LINING

1'-3/8"

NOTES:

1. STANDARD BLIND FLANGE CLASS PER AWWA C207.
2. SEE SPECS SEC 33 11 50 FOR MORTAR LINED AND COATED STEEL PIPE.

NOT TO SCALE

PL08-2A

022322