

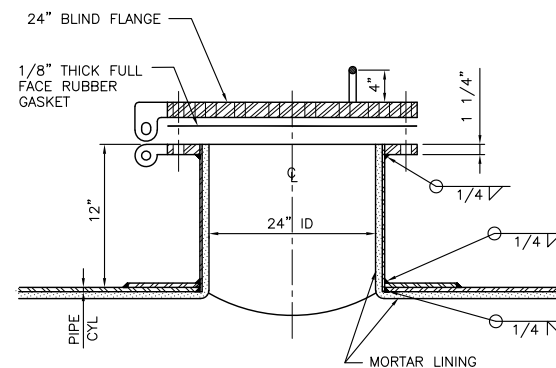
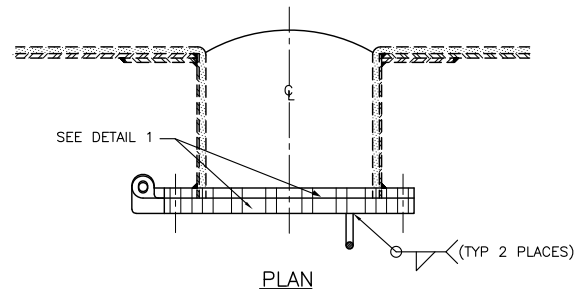
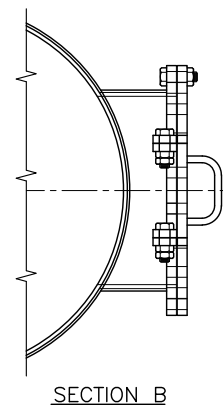
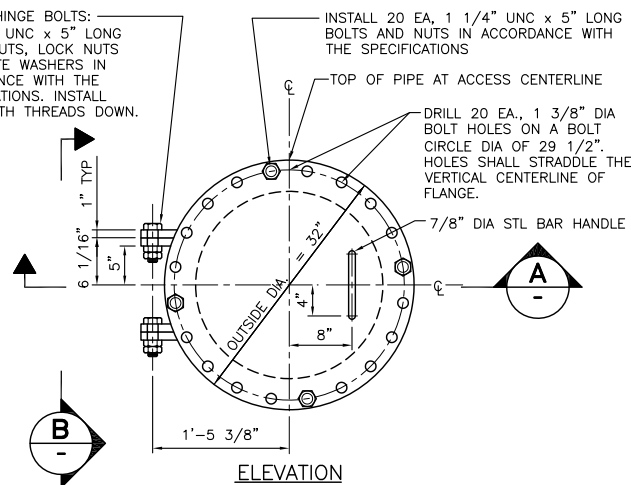
DESIGNER NOTES:

ENGINEER TO EVALUATE PROJECT PIPING WORKING PRESSURE TO ASSURE CORRECT PIPE FLANGE CLASS.

PROVIDE ALL HARDWARE (NUTS, BOLTS, ETC.) THAT CORRESPONDS TO THE ABOVE IDENTIFIED PIPE FLANGE CLASS.

INSTALL HINGE BOLTS:
2 EA, 1" UNC x 5" LONG BOLTS, NUTS, LOCK NUTS AND PLATE WASHERS IN ACCORDANCE WITH THE SPECIFICATIONS. INSTALL BOLTS WITH THREADS DOWN.

INSTALL 20 EA, 1 1/4" UNC x 5" LONG BOLTS AND NUTS IN ACCORDANCE WITH THE SPECIFICATIONS



NOTES:

1. STANDARD BLIND FLANGE CLASS PER AWWA C207.
2. SEE SPECS SEC 33 11 50 FOR MORTAR LINED AND COATED STEEL PIPE.

24-INCH VAULT ACCESS MANWAY

NOT TO SCALE

PL08-3

022322

