

**DESIGNER NOTES:**

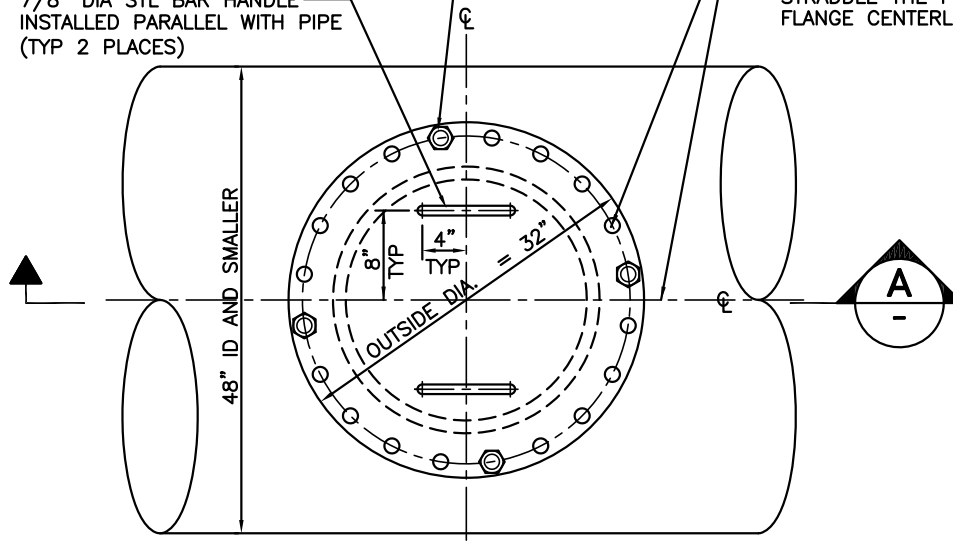
ENGINEER TO EVALUATE PROJECT PIPING  
WORKING PRESSURE TO ASSURE CORRECT  
PIPE FLANGE CLASS.

PROVIDE ALL HARDWARE (NUTS, BOLTS, ETC.)  
THAT CORRESPONDS TO THE ABOVE  
IDENTIFIED PIPE FLANGE CLASS.

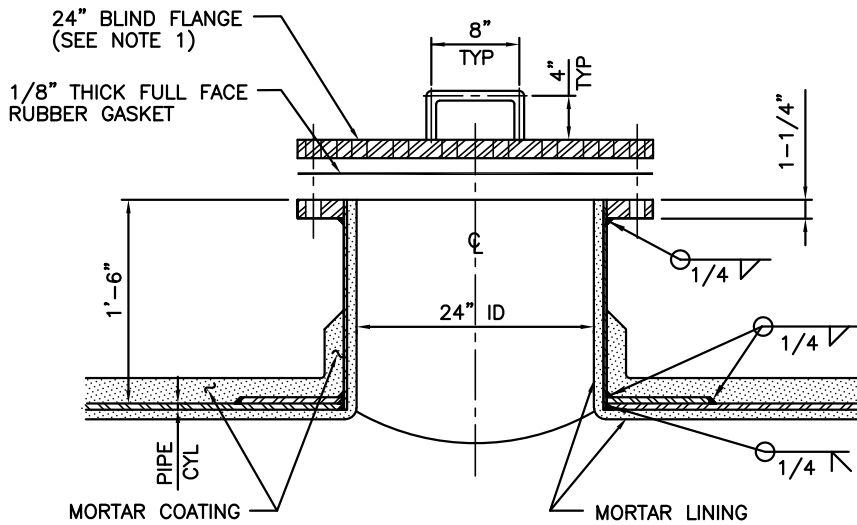
INSTALL 20 EA., 1-1/4", 7 UNC x 5"  
LONG BOLTS AND NUTS IN ACCORDANCE  
WITH THE SPECIFICATIONS. NUTS TO BE  
INSTALLED ON TOP OF BLIND FLANGE (TYP).

7/8" DIA STL BAR HANDLE  
INSTALLED PARALLEL WITH PIPE  
(TYP 2 PLACES)

DRILL 20 EA., 1-3/8"  
DIA BOLT HOLES ON  
A BOLT CIRCLE DIA OF  
29-1/2". HOLES SHALL  
STRADDLE THE PIPE AND  
FLANGE CENTERLINE.



PLAN



SECTION A

**NOTES:**

1. STANDARD BLIND FLANGE CLASS PER AWWA C207.
2. SEE SPECS SEC 33 11 50 FOR MORTAR LINED AND COATED STEEL PIPE.

**24-INCH PIPE ACCESS MANWAY**

NOT TO SCALE

PL08-2 022322

