

DRILL 9/16" HOLE FOR  
INSTALLATION OF ADHESIVE  
ANCHOR

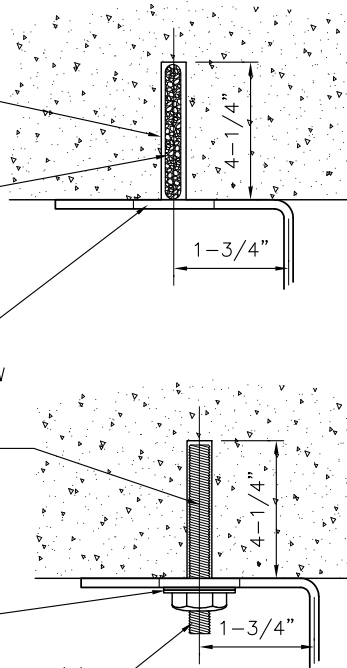
ADHESIVE CARTRIDGE,  
INSTALL CARTRIDGE  
PRIOR TO INSTALLATION  
OF SS ANCHOR ROD

FLAT BAR BRACKET, DRILL  
7/8"Ø x 1-1/4" LONG  
HOLES (TYP), SEE TABLE BELOW  
FOR FLAT BAR SIZE.

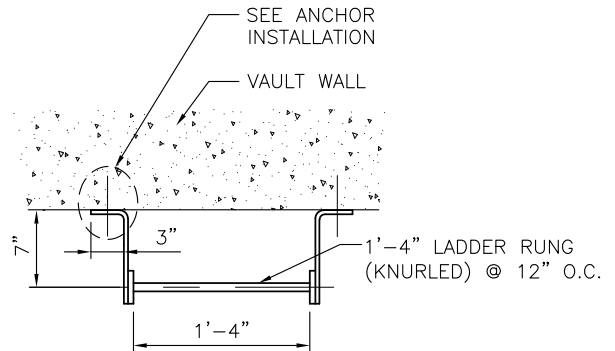
1/2" x 6-1/2" SSTL ANCHOR  
ROD INSTALL SS ANCHOR ROD  
AND ADHESIVE CARTRIDGE PER  
MANUFACTURE'S SPECIFICATIONS

SHIM WITH SSTL WASHERS  
AS REQUIRED

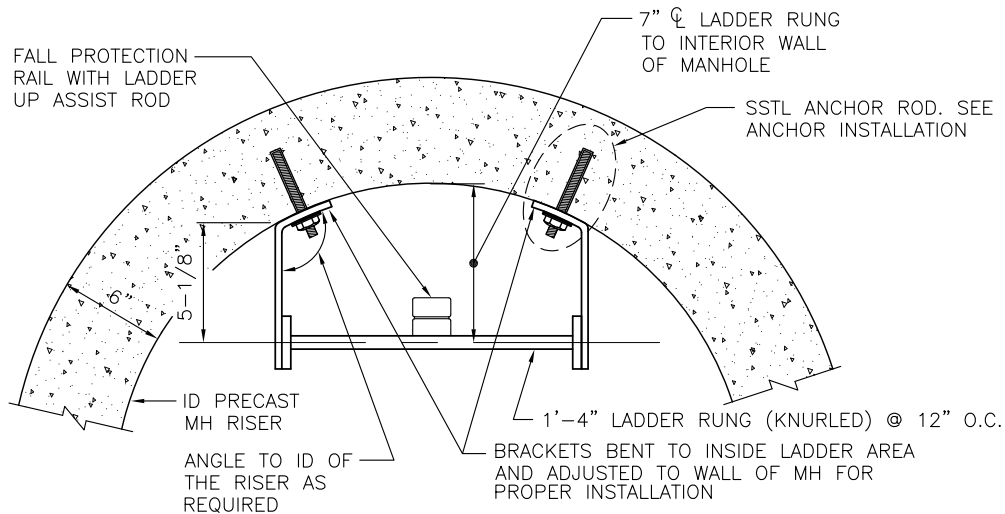
CUT ANCHOR ROD TO ALLOW THREE (3)  
THREADS TO PROTRUDE FROM ANCHOR  
NUT AS REQUIRED



### ANCHOR INSTALLATION



### LADDER IN VAULT



### LADDER IN MANHOLE

FLAT BAR SIZE	
LADDER LENGTH	FLAT BAR SIZE
5'-0" TO 20'-0"	3" x 3/8"
OVER 20'-0"	4" x 1/2"

#### NOTES:

1. APPROVAL OF THE ENGINEER REQUIRED FOR ANY BRACKET SPACING OVER 5'-0" OC
2. LADDER SHALL BE MADE OF MILD CARBON STEEL WITH 3/4" DIA BAR RUNGS (KNURLED) PLUG WELDED TO RUNNERS.
3. GALVANIZE LADDER ASSEMBLY AFTER WELDING.

## LADDER INSTALLATION DETAILS

NOT TO SCALE

PL05-6

013018

