

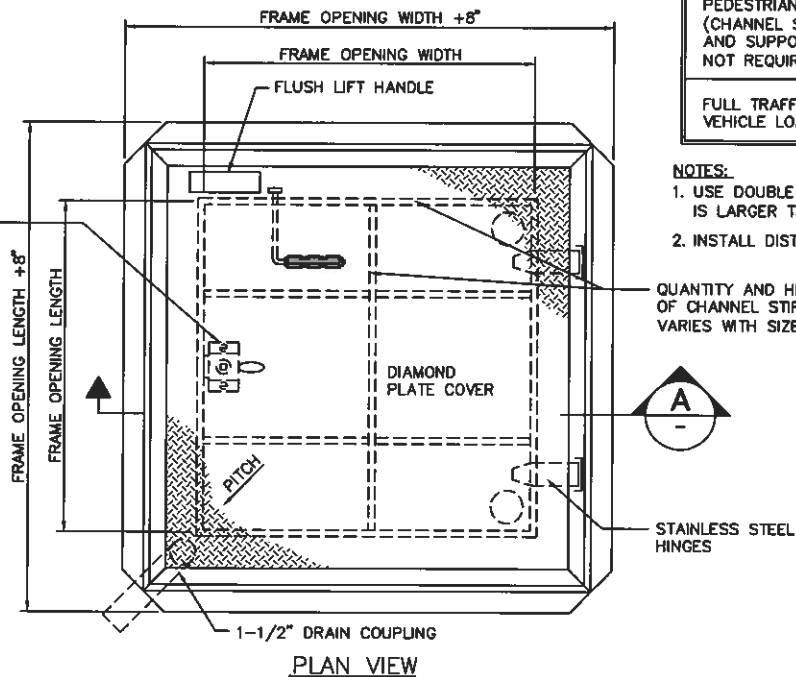
SECTION A

LOADING TYPE	LOAD REQUIREMENT
PEDESTRIAN LOADING (CHANNEL STIFFENERS AND SUPPORT SHELF NOT REQUIRED)	300 PSF
FULL TRAFFIC VEHICLE LOADING	16,000 LB WHEEL LOAD

NOTES:

1. USE DOUBLE DOOR ACCESS HATCH WHEN OPENING IS LARGER THAN 42" IN EITHER DIRECTION.
2. INSTALL DISTRICT PROVIDED LOCK AS REQUIRED

STAINLESS STEEL RECESSED
SELF-LATCHING LOCK WITH
REMOVABLE KEY WRENCH



PLAN VIEW

SINGLE DOOR ACCESS HATCH

NOT TO SCALE

PL17-1 112309

