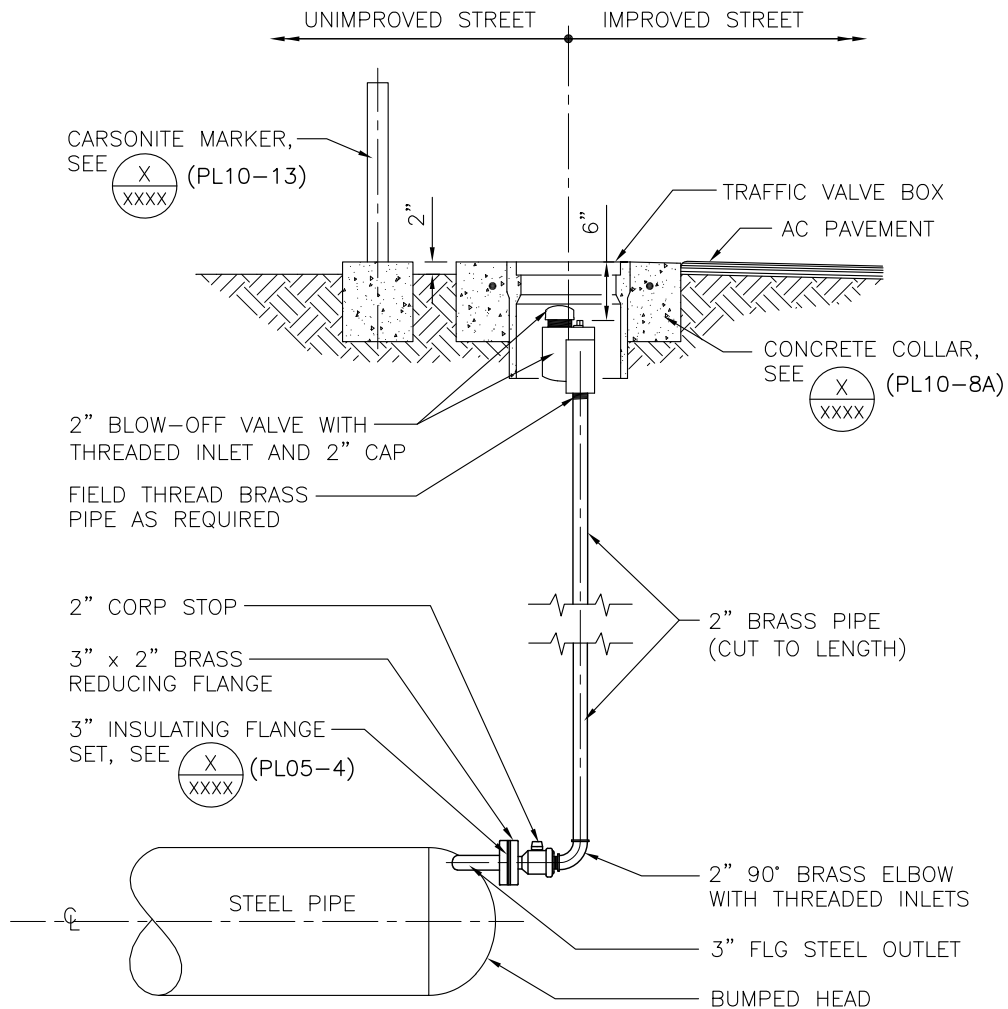


DESIGNER NOTES:

ENGINEER TO VERIFY PROJECT AREA TRAFFIC VOLUME AND SPEED TO DETERMINE MOST DURABLE BLOW-OFF ASSEMBLY DETAIL IS UTILIZED.

IDENTIFY LOCATIONS ON PLANS AND REFERENCE TO CORRECT STANDARD DETAIL WHEN USING MULTIPLE ASSEMBLY OPTIONS.



NOTES:

1. SEE SPECIFICATIONS FOR ALL APPROVED PRODUCTS.
2. ALL BRASS PIPE SHALL BE WRAPPED WITH TWO LAYERS OF SIX (6) MIL POLYETHYLENE. BACKFILL ALL AROUND WITH 4" MINIMUM OF SAND TO 12" MAX ABOVE MAIN PIPE.

2" BLOW-OFF ASSEMBLY INSTALLATION WITH TRAFFIC BOX - STEEL PIPE

NOT TO SCALE

PL10-3A

011922

