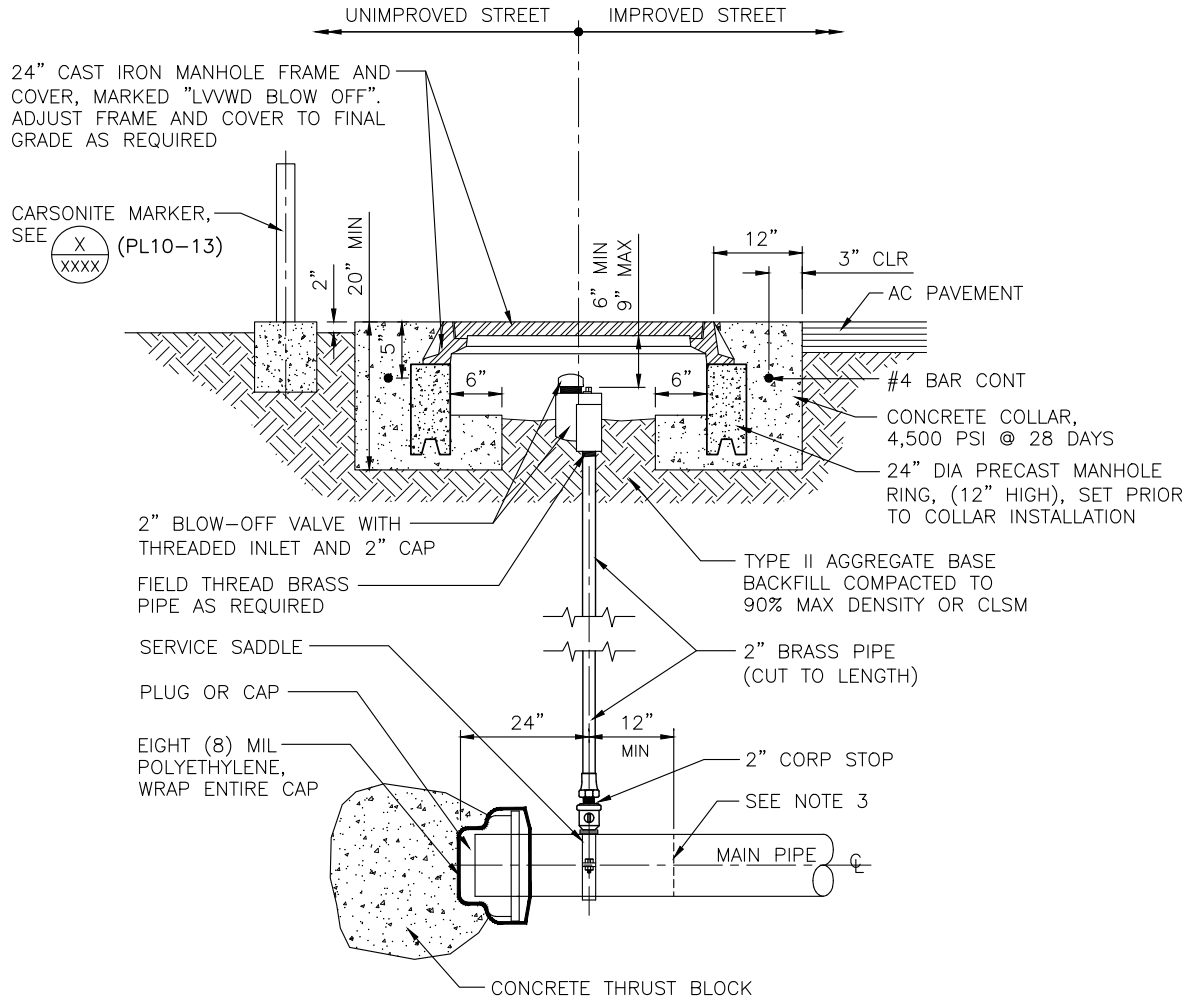


**DESIGNER NOTES:**

ENGINEER TO VERIFY PROJECT AREA TRAFFIC VOLUME AND SPEED TO DETERMINE MOST DURABLE BLOW-OFF ASSEMBLY DETAIL IS UTILIZED.

IDENTIFY LOCATIONS ON PLANS AND REFERENCE TO CORRECT STANDARD DETAIL WHEN USING MULTIPLE ASSEMBLY OPTIONS.



**NOTES:**

1. SEE SPECIFICATIONS FOR ALL APPROVED PRODUCTS.
2. ALL BRASS PIPE SHALL BE WRAPPED WITH TWO LAYERS OF SIX (6) MIL POLYETHYLENE. BACKFILL ALL AROUND WITH 4" MINIMUM OF SAND TO 12" MAX ABOVE MAIN PIPE.
3. CUT AND REMOVE EXISTING PIPE 12" MIN BEYOND EXISTING BLOW-OFF SERVICE SADDLE PRIOR TO CONNECTING TO EXISTING PIPELINES.
4. FINAL RIM ELEVATION TO BE 1/8" TO 1/4" BELOW FINAL STREET GRADE.
5. MORE STRINGENT INSTALLATION REQUIREMENTS MAY BE IMPOSED BY THE ENTITY HAVING THE JURISDICTION OVER THE TRAFFIC BOX INSTALLATION LOCATION.
6. CONTRACTOR TO FORM CONCRETE COLLAR IN UNIMPROVED AREAS WITH SONOTUBE AND REMOVE PRIOR TO BACKFILL INSTALLATION (TYP).

## 2" BLOW-OFF ASSEMBLY INSTALLATION WITH MANHOLE - ACP PVC OR DI PIPE

NOT TO SCALE

PL10-2B

071822

