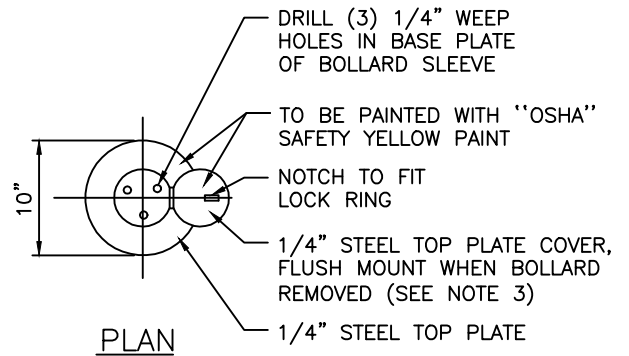
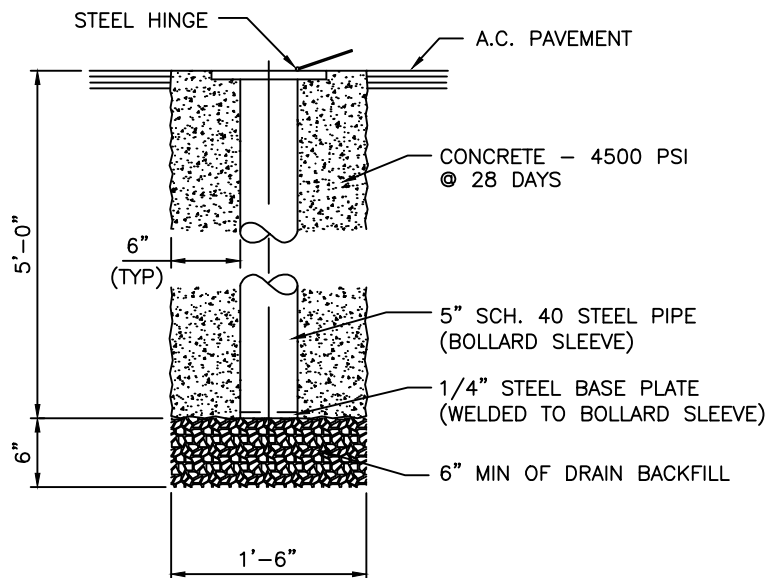


REMOVABLE BOLLARD



PLAN



BOLLARD SLEEVE

NOTES:

1. PLACE 6" WIDE, YELLOW CLASS 4 REFLECTIVE TAPE (PER STANDARD SPECIFICATIONS, SECTION 716), 4" DOWN FROM TOP, FOR FULL DIAMETER ON ALL BOLLARDS.
2. CONTRACTOR TO ASSURE THAT BOLLARDS ARE PLACED TO ALLOW FULL ACCESS TO THE PROTECTED FACILITY.
3. INSTALL LVWD PROVIDED LOCK AFTER INSTALLATION IS COMPLETE
4. CONTRACTOR TO SUBMIT SHOP DRAWING ON BOLLARD ASSEMBLY

**REMOVABLE VEHICULAR PROTECTION BOLLARD**

NOT TO SCALE

PL15-4B

041823

