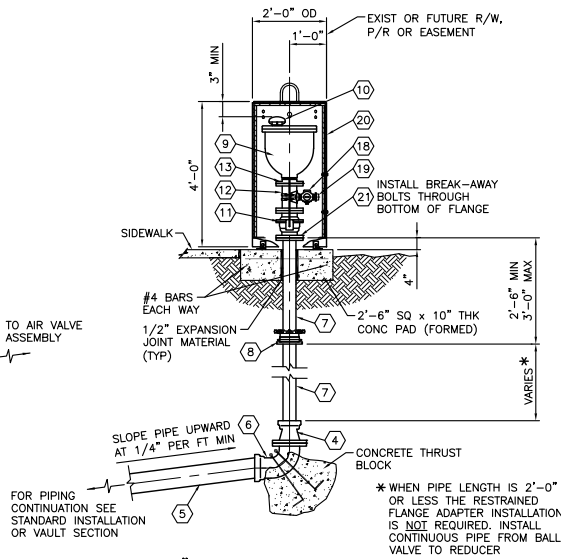
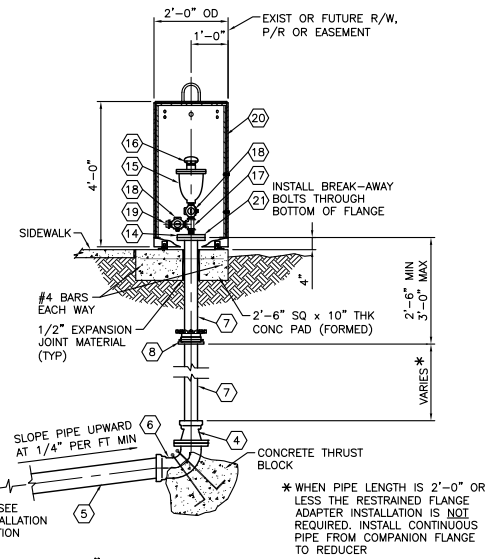


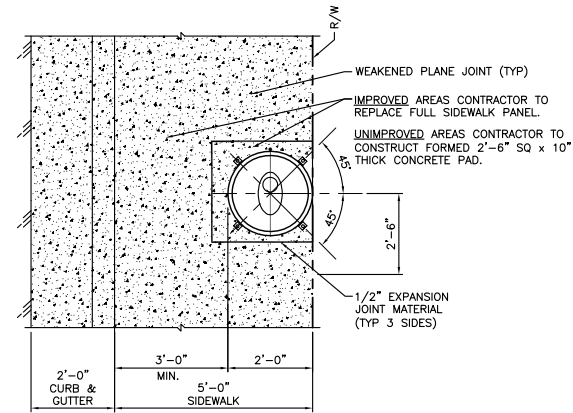
STANDARD INSTALLATION



4" AIR VALVE PROFILE



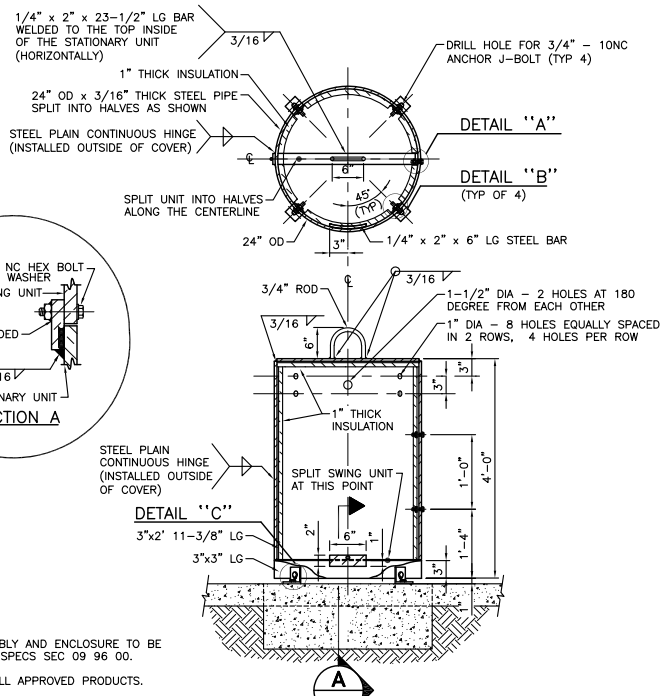
2" AIR VALVE PROFILE



PLAN VIEW

MATERIAL LIST:

- | | |
|--|--|
| ① 6" FLG STL OUTLET FOR MLC STLPIPE, FLG TEE FOR DIP | ⑬ 4" THREADED COMPANION FLANGE WITH THREADED BRASS NIPPLE |
| ② 6" FLG x FLG 90° FLG DUCTILE IRON BEND | ⑭ 4" x 2" THREADED COMPANION FLANGE |
| ③ 6" FLG x PO OR FLG x MJ GATE VALVE W/2" OPERATING NUT | ⑮ 2" AIR VALVE, THREADED INLET |
| ④ 6" x 4" FLG x MJ (RESTRAINED) DUCTILE IRON REDUCER | ⑯ 2" MUSHROOM VENT CAP WITH #22/24 STAINLESS STEEL MESH SCREEN |
| ⑤ 6" DUCTILE IRON PC350 OR 6" PVC C900 PIPE | ⑰ 2" BRASS TEE, THREADED INLETS WITH THREADED BRASS NIPPLES |
| ⑥ 6" FLG x MJ (RESTRAINED) 90° DUCTILE IRON BEND | ⑱ 2" CURB STOP, MALE THREADED WITH LOCKING EYE |
| ⑦ 4" FLG x PE OR PE x PE DUCTILE IRON PC350 PIPE (CUT TO FIT) | ⑲ 2" FEMALE THREADED BRONZE CAP |
| ⑧ 4" RESTRAINED FLANGE ADAPTER | ⑳ 4'-0" HIGH x 2'-0" OD STEEL ENCLOSURE OR ALTERNATE FIBERGLASS ENCLOSURE WHEN APPROVED (CONTRACTOR TO SUBMIT SHOP DRAWINGS) |
| ⑨ 4" AIR VALVE, THREADED INLET | ㉑ 5/8"-11NC BREAK-AWAY ZINC PLATED HEX HD BOLT, HEX NUT AND LOCKWASHER |
| ⑩ 4" MUSHROOM VENT CAP WITH #22/24 STAINLESS STEEL MESH SCREEN | ㉒ VALVE BOX AND COVER |
| ⑪ 4" FLG BALL VALVE - QUARTER TURN | |
| ⑫ 4" FLG DUCTILE IRON SPOOL (9" LONG) WITH 2" THREADED PORT OR 2" SERVICE SADDLE | |



NOTES:

1. EXPOSED AIR VALVE ASSEMBLY AND ENCLOSURE TO BE COATED AND PAINTED PER SPECS SEC 09 96 00.
2. SEE SPECIFICATIONS FOR ALL APPROVED PRODUCTS.
3. INDIVIDUAL COMPONENT DIMENSIONS VARY, CONTRACTOR TO VERIFY ASSEMBLY MEETS DIMENSIONAL CLEARANCE REQUIREMENTS PRIOR TO ORDERING ENCLOSURE AND ASSEMBLY.

DESIGNER NOTES:

ENGINEER TO VERIFY THE REQUIRED SIZE AND TYPE OF AIR VALVE ASSEMBLY PER PROJECT REQUIREMENTS.
USE ONLY THE APPROPRIATE DRAWING(S) AND DESCRIPTIONS FOR CORRECT SIZE OF AIR VALVE ASSEMBLY.

AIR VALVE ASSEMBLY FOR 2-INCH AND 4-INCH VALVES

NOT TO SCALE

PL09-1 071322