

1/4" THK. PL x 28" O.D.
 FLANGE 2-REQUIRED. BOLTS:
 5/8" x 11 UNC x 1-1/2" LONG
 8 EA. EQUALLY SPACED

SECURITY SCREEN (X) (RS12-6D)
 XXX

SECURITY SCREEN:
 INSTALL STAINLESS STEEL
 EXPANDED STEEL #22/24
 MESH. PLACE MESH BETWEEN
 THE BOLTED FLANGES AND
 TACK WELD THE EXPANDED
 METAL SHEET TO THE 1/4"
 STEEL BACKING PLATE ON THE
 BUMPED HEAD.

(RS12-6B) (X) VENT
 XXX OPENING

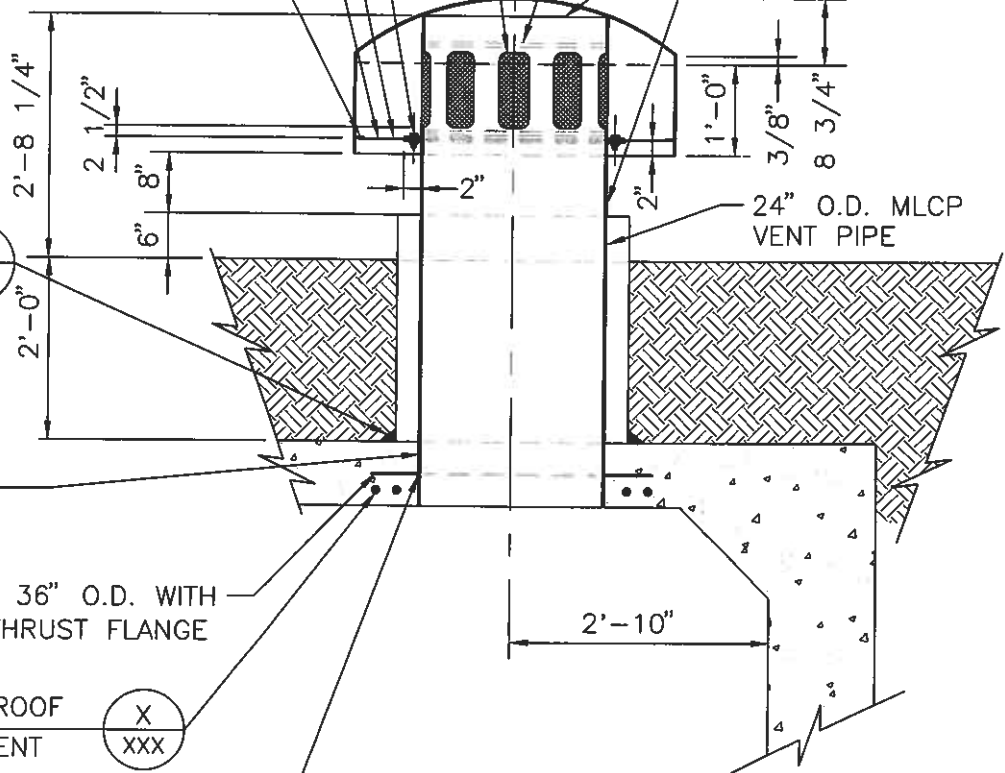
3'-6" O.D. x 3/8" THK.
 BUMPED HEAD WITH SKIRT.
 GALVANIZE AFTER WELDING.

INSTALL 6x6 MESH, .035" STAINLESS
 STEEL WIRE CLOTH. SECURE WIRE CLOTH
 TO THE EXTERIOR OF THE VERTICAL VENT
 PIPE WITH TWO STAINLESS STEEL CLAMP
 BANDS AS REQUIRED.

BACKING PLATE (X) (RS12-6A)
 XXX (X) (RS12-6C)

3/16" 2 1/4" - 6
 HOLD MORTAR COATING

SEALANT FILLET (X) (RS11-1)
 XXX



HOLD MORTAR COATING

1/4" THK. PL x 36" O.D. WITH
 24 1/16" I.D. THRUST FLANGE

ADDITIONAL ROOF REINFORCEMENT (X) (RS16-1)
 XXX

TYP. 3/16

RESERVOIR VENT

NOT TO SCALE

RS12-6 090808

