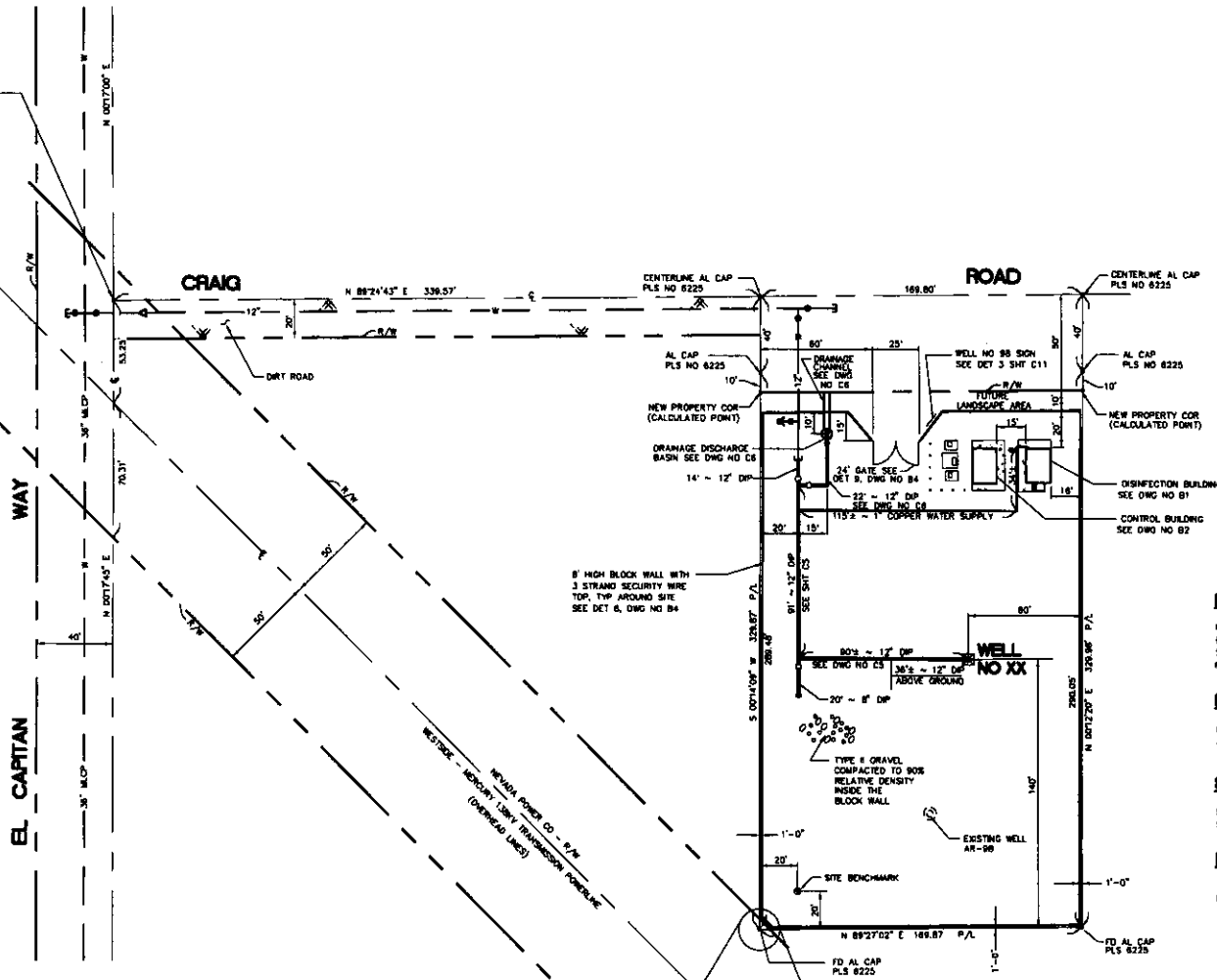


C 1/4 COR
SEC 5, T 20 S
R 90 E, MDM
CLARK COUNTY, NEVADA
CLY BRASS CAP
IN WELL
MONUMENT

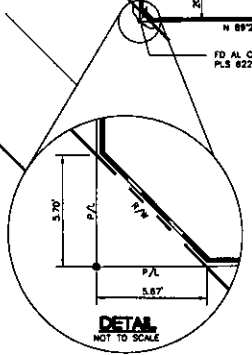


BASIS OF BEARING:
NORTH 89°23'50" EAST, BEING THE NORTH LINE OF THE NORTHEAST QUARTER (NE 1/4) OF SECTION 5, TOWNSHIP 20 SOUTH, RANGE 90 EAST, MDM, AS SHOWN PER RECORD OF SURVEY MAP FILE 43, PAGE 84, CLARK COUNTY RECORDS, NEVADA.

BENCHMARK:
CLARK COUNTY BM (LOGGED) R/NET AND PLATE IN CONCRETE MONUMENT 35' SOUTH AND 35' WEST CRAIG ROAD AND EL CAPITAN HWY. ELEVATION=2438.93 (NAVD 1988)

SITE BENCHMARK:
SET REBAR & AL CAP IN CONCRETE PBL-PLS 8431 STAMPED WITH ELEVATION = 2450.29 (NAVD 1988)

REFERENCE:
RECORD OF SURVEY FILE 59, PAGE 56.



FOR EXAMPLE ONLY
WE16 011900



LAS VEGAS VALLEY WATER DISTRICT
3001 S. VALLEY VIEW BOULEVARD
LAS VEGAS, NEVADA 89103
CWB 87-001

VERIFY SCALE
1/2" = 10'
1/4" = 5'
1/8" = 2.5'
ALL DIMENSIONS
ONLY AND ONLY
MADE ON ORIGINAL

EQUIP WELL NO. XX	DATE
WELL NO XX SITE PLAN	BY
	AS SHOWN

DRAWN BY:	CHECKED BY:	RECOMMENDED BY:	ACCEPTED BY:

CONTRACT NUMBER
XXX
DRAWING NUMBER XX
SHEET OF XX