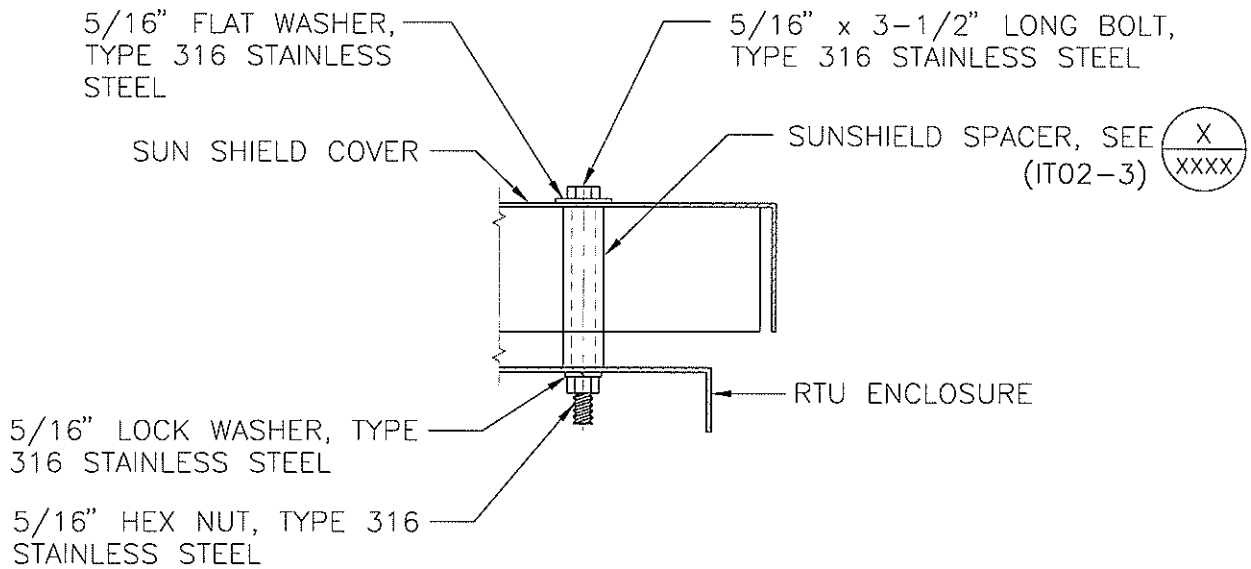


NOTES:

1. MATERIAL: 16 GA. ELECTROPLATED COLD-ROLLED STEEL SHEET.
2. ALL SHARP EDGES SHALL BE DEBURRED.
3. FINISH: POLYESTER URETHANE (POWDER COAT) WHITE APPLIED BY THE SUNSHIELD MANUFACTURER.



PRV/FLOW STATION ENCLOSURE SUNSHIELD

NOT TO SCALE

IT02-2

111506

