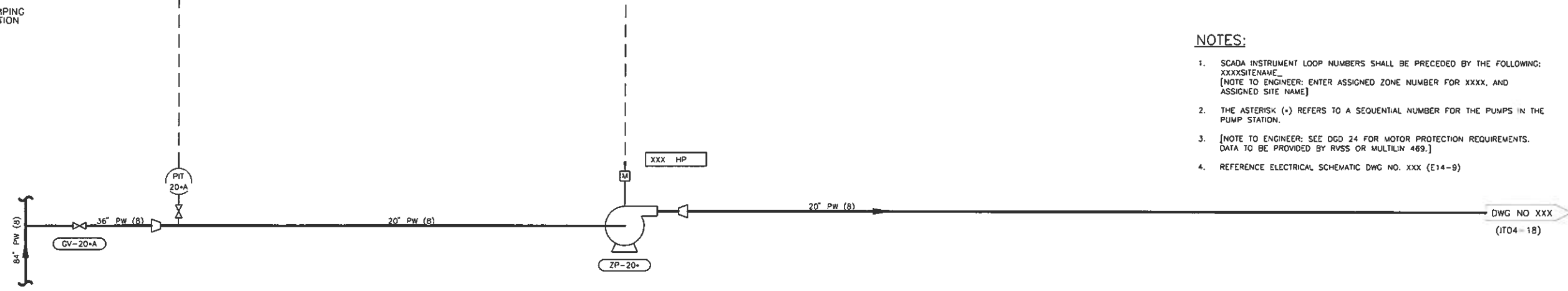


**NOTES:**

1. SCADA INSTRUMENT LOOP NUMBERS SHALL BE PRECEDED BY THE FOLLOWING:  
 XXXXSITENAME\_  
 [NOTE TO ENGINEER: ENTER ASSIGNED ZONE NUMBER FOR XXXX, AND ASSIGNED SITE NAME]
2. THE ASTERISK (\*) REFERS TO A SEQUENTIAL NUMBER FOR THE PUMPS IN THE PUMP STATION.
3. [NOTE TO ENGINEER: SEE OGD 24 FOR MOTOR PROTECTION REQUIREMENTS. DATA TO BE PROVIDED BY RVSS OR MULTILIN 469.]
4. REFERENCE ELECTRICAL SCHEMATIC DWG NO. XXX (E14-9)



**ZONE PUMP STRING TYPICAL 480V RVSS MOTOR STARTER PROCESS AND INSTRUMENTATION DIAGRAM**

DWG NO XXX  
(IT04-18)