

PRV AND SOLENOID POSITIONING TABLE			
VALVE NO.	PRV NORMAL FUNCTION	SOLENOID STATE * (PORT USAGE SEE TABLE 1)	PILOT DIAGRAM
PRV NO. XXX	OPEN/REGULATING	DE-ENERGIZE TO <u>OPEN</u> PRV	DIAGRAM 1
PRV NO. XXX	OPEN/REGULATING	DE-ENERGIZE TO <u>OPEN</u> PRV	DIAGRAM 1
PRV NO. XXX	OPEN/REGULATING	DE-ENERGIZE TO <u>OPEN</u> PRV	DIAGRAM 1
PRV NO. XXX	CLOSED	DE-ENERGIZE TO <u>CLOSE</u> PRV	DIAGRAM 2
PRV NO. XXX	CLOSED	DE-ENERGIZE TO <u>CLOSE</u> PRV	DIAGRAM 2

* THE SOLENOID NORMAL STATE IS TO BE DE-ENERGIZED (TYP).

TABLE 1	
SOLENOID PORTING	
SOLENOID STATE	PORTS CONNECTED
DE-ENERGIZED	1 TO 3
ENERGIZED	1 TO 2

SOLENOID PILOT SYSTEM
PORT CONNECTIONS FOR
DE-ENERGIZE TO OPEN

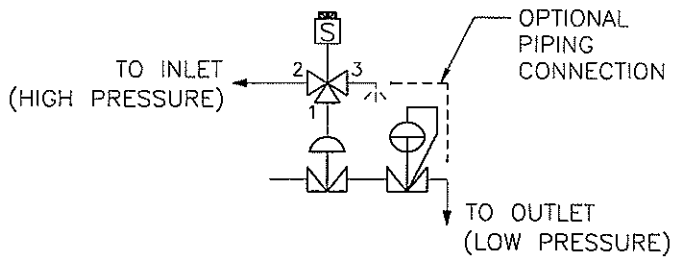


DIAGRAM 1

SOLENOID PILOT SYSTEM
PORT CONNECTIONS FOR
DE-ENERGIZE TO CLOSED

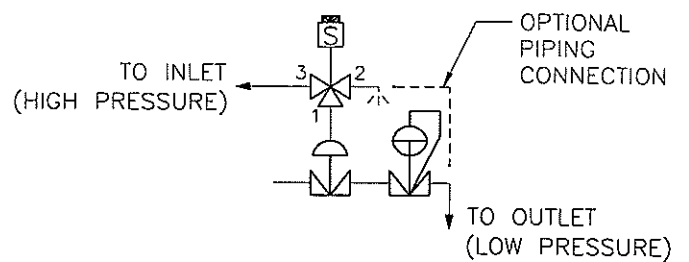


DIAGRAM 2

PRV ENABLE/DISABLE SOLENOID

NOT TO SCALE

IT04-2A

080106

