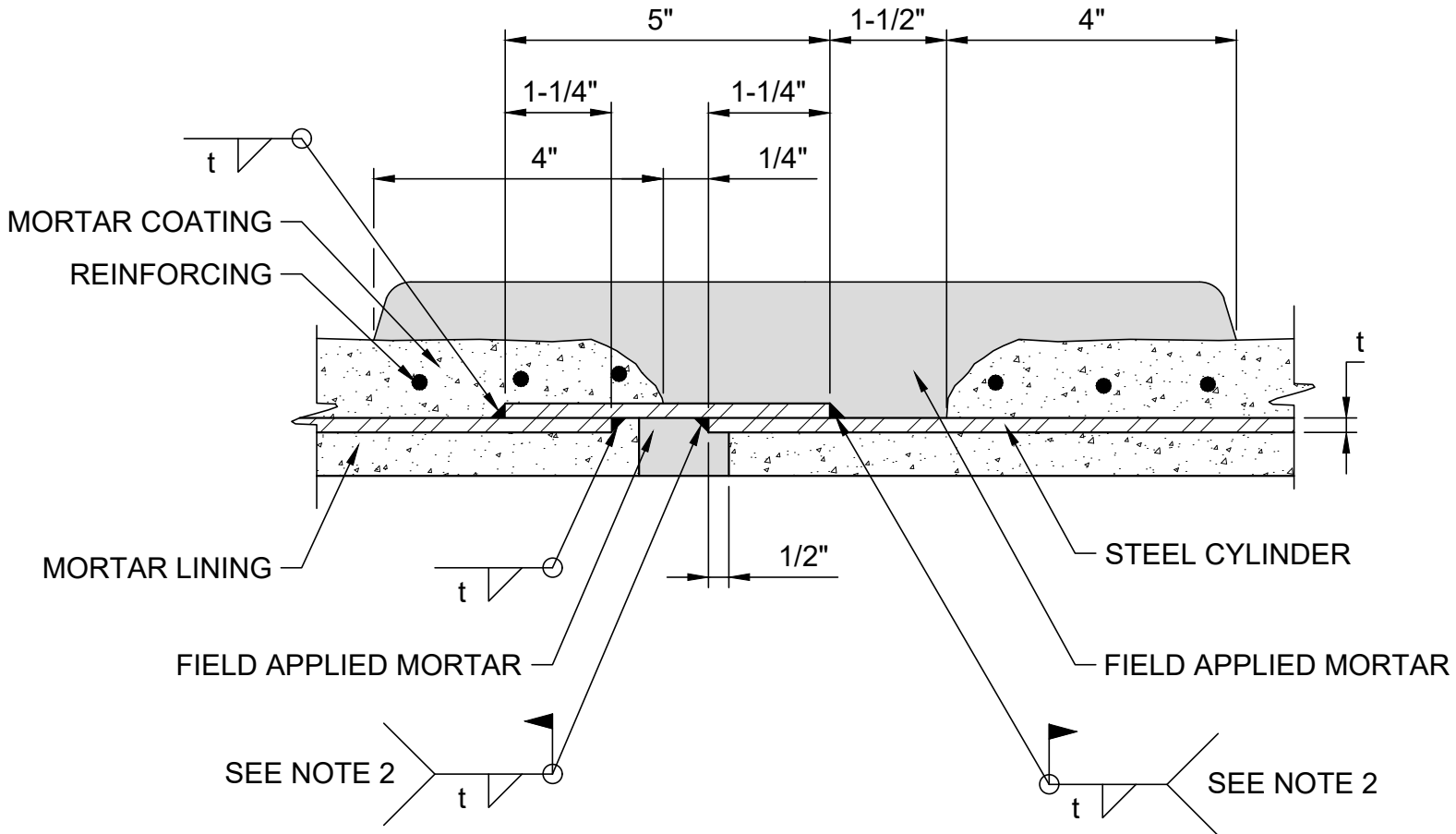


DESIGNER NOTE:
NOTES 2 OR 3 MAY BE DELETED,
DEPENDING ON THE PROJECT
PIPE REQUIREMENTS.

FREEZE TEXT5 LAYER TO
REMOVE THIS NOTE.



NOTES:

1. SEE SPECS SEC 33 11 50 FOR MORTAR LINED AND COATED STEEL PIPE.
2. WELD OUTSIDE ON PIPE SMALLER THAN 36". WELD INSIDE ON PIPE GREATER THAN OR EQUAL TO 36", UNLESS APPROVED BY ENGINEER.
3. IF BOTH INSIDE AND OUTSIDE LAPS ARE WELDED, PERFORM PNEUMATIC TESTING OF JOINT WELDS IN ACCORDANCE WITH SPECS SEC 33 13 02.

LAP - WELDED SLIP JOINT ALTERNATE "B" FIELD WELDED

NOT TO SCALE

PL01-2

042922

