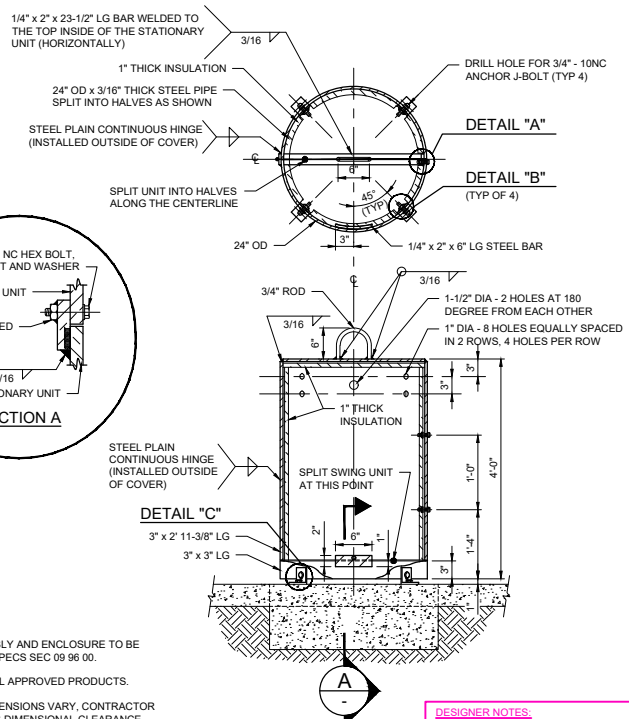
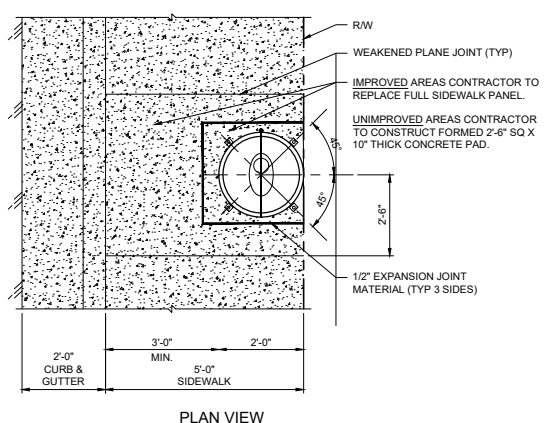


MATERIAL LIST:

1	6" FLG STL OUTLET FOR MLC STL PIPE, FLG TEE FOR DIP	12	4" FLG DUCTILE IRON SPOOL (9' LONG) WITH 2" THREADED PORT OR 2" SERVICE SADDLE
2	6" FLG x FLG 90° FLG DUCTILE IRON BEND	13	4" THREADED COMPANION FLANGE WITH THREADED BRASS NIPPLE
3	6" FLG x PO OR FLG x MJ GATE VALVE W/2" OPERATING NUT	14	4" x 2" THREADED COMPANION FLANGE
4	6" x 4" FLG x MJ (RESTRAINED) DUCTILE IRON REDUCER	15	2" AIR VALVE, THREADED INLET
5	6" DUCTILE IRON PC350 OR 6" PVC C900 PIPE	16	2" MUSHROOM VENT CAP WITH #22/24 STAINLESS STEEL MESH SCREEN
6	6" FLG x MJ (RESTRAINED) 90° DUCTILE IRON BEND	17	2" BRASS TEE, THREADED INLETS WITH THREADED BRASS NIPPLES
7	4" FLG x PE OR PE x PE DUCTILE IRON PC350 PIPE (CUT TO FIT)	18	2" CURB STOP, MALE THREADED WITH LOCKING EYE
8	4" RESTRAINED FLANGE ADAPTER	19	2" FEMALE THREADED BRONZE CAP
9	4" AIR VALVE, THREADED INLET	20	4'-0" HIGH x 2'-0" OD STEEL ENCLOSURE OR ALTERNATE FIBERGLASS ENCLOSURE WHEN APPROVED (CONTRACTOR TO SUBMIT SHOP DRAWINGS)
10	4" MUSHROOM VENT CAP WITH #22/24 STAINLESS STEEL MESH SCREEN	21	5/8"-11NC BREAK-AWAY ZINC PLATED HEX HD BOLT, HEX NUT AND LOCKWASHER
11	4" FLG BALL VALVE - QUARTER TURN	22	VALVE BOX AND COVER



- NOTES:**
- EXPOSED AIR VALVE ASSEMBLY AND ENCLOSURE TO BE COATED AND PAINTED PER SPECS SEC 09 96 00.
 - SEE SPECIFICATIONS FOR ALL APPROVED PRODUCTS.
 - INDIVIDUAL COMPONENT DIMENSIONS VARY, CONTRACTOR TO VERIFY ASSEMBLY MEETS DIMENSIONAL CLEARANCE REQUIREMENTS PRIOR TO ORDERING ENCLOSURE AND ASSEMBLY.

DESIGNER NOTES:
ENGINEER TO VERIFY THE REQUIRED SIZE AND TYPE OF AIR VALVE ASSEMBLY PER PROJECT REQUIREMENTS.
USE ONLY THE APPROPRIATE DRAWING(S) AND DESCRIPTIONS FOR CORRECT SIZE OF AIR VALVE ASSEMBLY.