



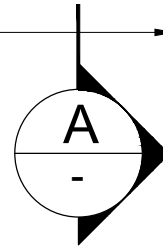
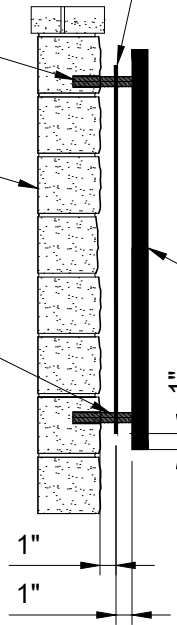
DIBOND ALUMINUM COMPOSITE (3MM BLACK OVER WHITE WITH BLACK SIDE FACING FORWARD)

EPOXY ANCHOR

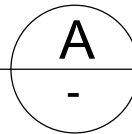
CMU WALL

ALUMINUM ANCHOR SIZE PER MANUFACTURER 1 IN EACH CORNER AND 2 FOR EACH INDEPENDENTLY SUPPORTED TEXT PIECE

1/4" ALUMINUM BRUSHED FINISH WITH TEXT CUT OUT



SECTION



LVVWD SITE FACILITY SIGN

NOT TO SCALE

MS01-1 092023

