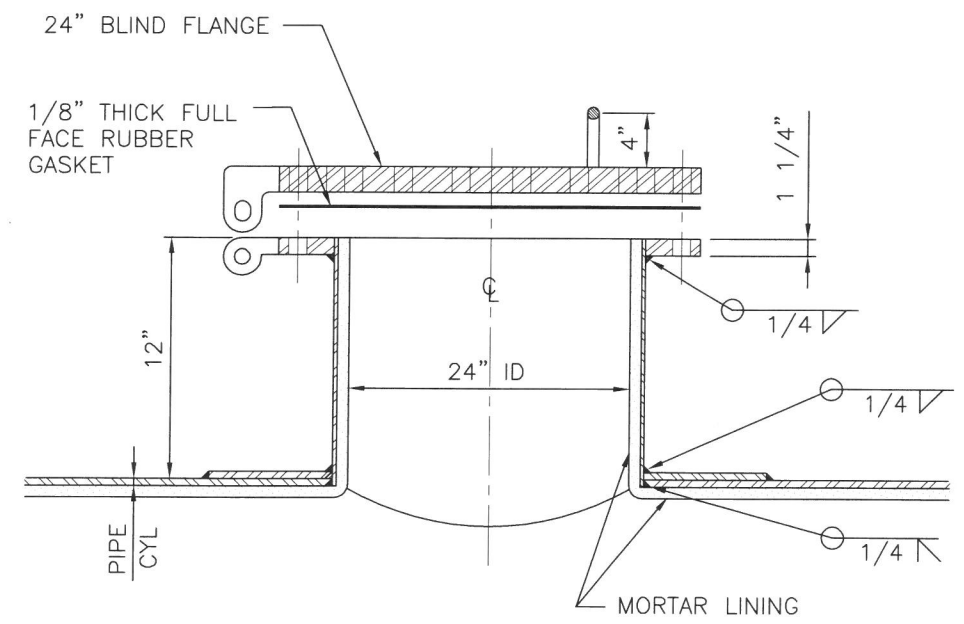
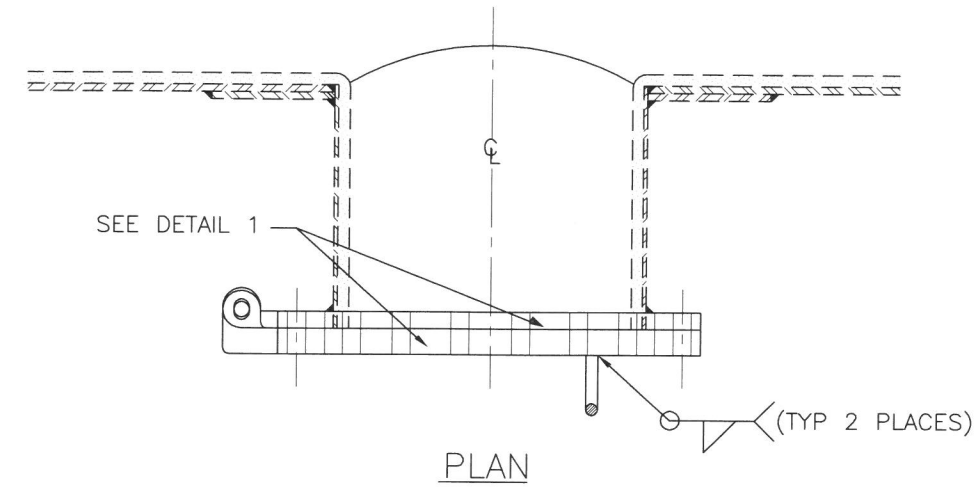
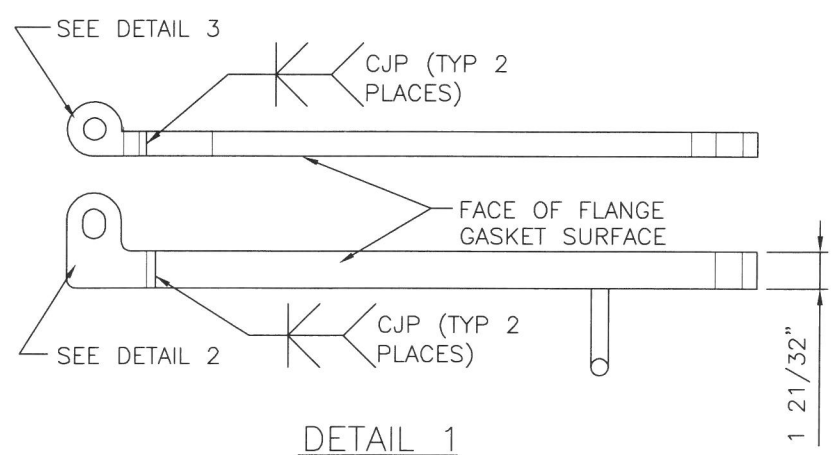
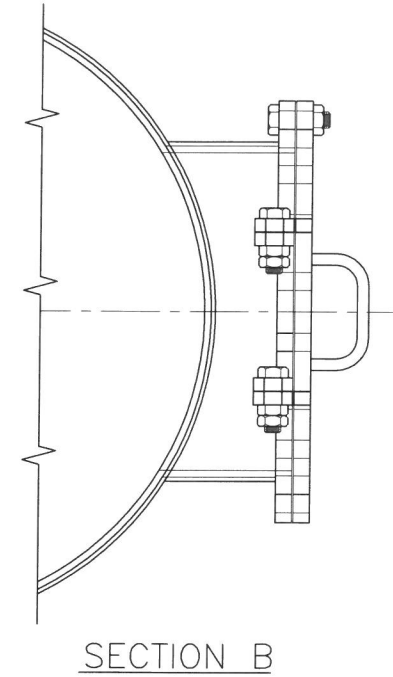
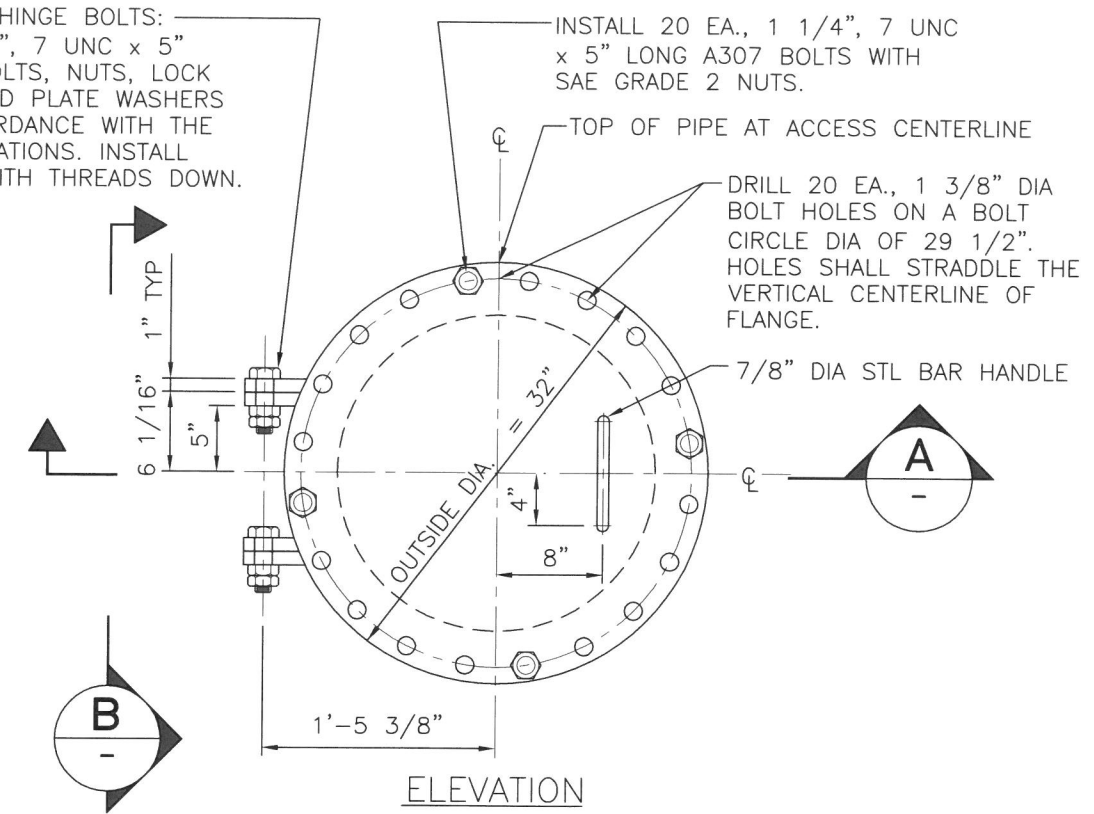


INSTALL HINGE BOLTS:  
 2 EA., 1", 7 UNC x 5"  
 LONG BOLTS, NUTS, LOCK  
 NUTS AND PLATE WASHERS  
 IN ACCORDANCE WITH THE  
 SPECIFICATIONS. INSTALL  
 BOLTS WITH THREADS DOWN.



- NOTES**
1. STANDARD BLIND FLANGE PER AWWA C207-94.
  2. SEE SPECS SEC 33 11 50 FOR MORTAR LINED AND COATED STEEL PIPE.