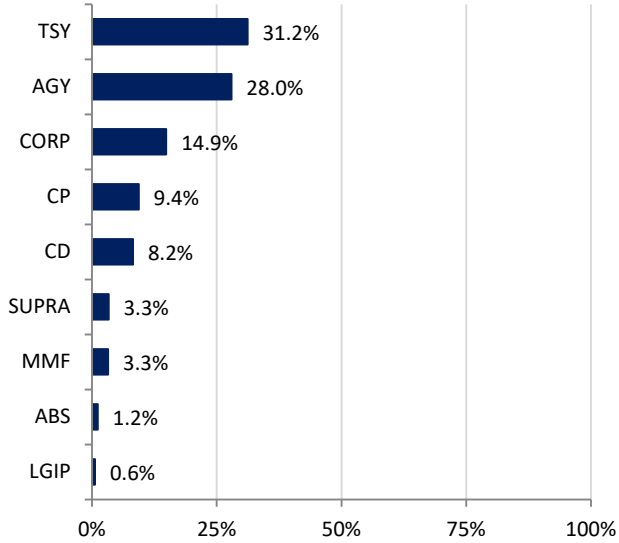




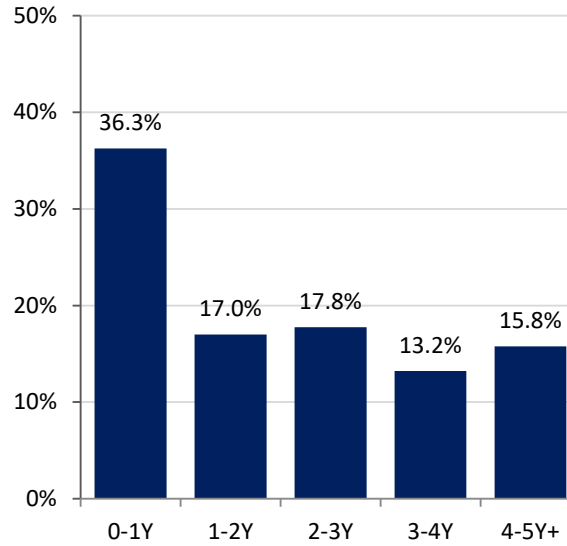
# Las Vegas Valley Water District Portfolio Summary

As of  
4/30/2024

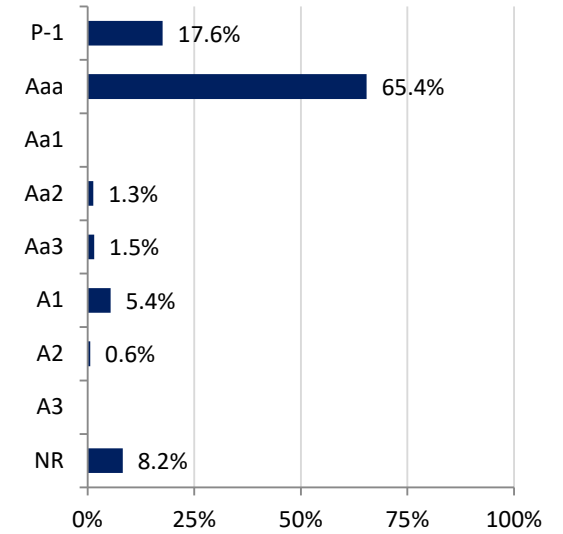
## SECTOR ALLOCATION



## MATURITY DISTRIBUTION



## CREDIT QUALITY (MOODY'S)



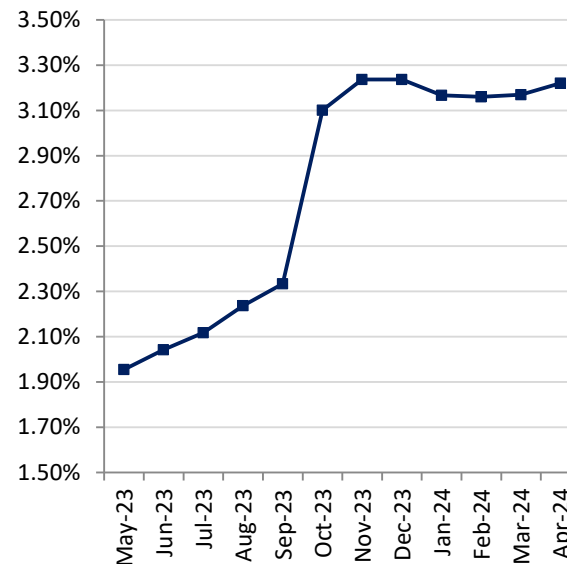
## ACCOUNT SUMMARY

	4/30/24	3/31/24
<b>Market Value</b>	\$830,368,848	\$832,494,782
<b>Book Value</b>	\$852,988,877	\$850,456,916
<b>Variance</b>	-\$22,620,030	-\$17,962,134
<b>Par Value</b>	\$862,127,408	\$859,086,876
<b>Book Yield</b>	3.22%	3.17%
<b>Years to Maturity</b>	1.87	1.78
<b>Effective Duration</b>	1.69	1.67

### Earnings

<b>Current Month</b>	\$2,324,342
<b>Fiscal YTD</b>	\$19,272,569

## MONTH-END PORTFOLIO BOOK YIELD



## ISSUERS OVER 5%\*

Issuer	% Portfolio
U.S. Treasury	31.2%
FFCB	10.8%
FAMCA	6.4%

\*Issuers in portfolio that make up more than 5% of portfolio