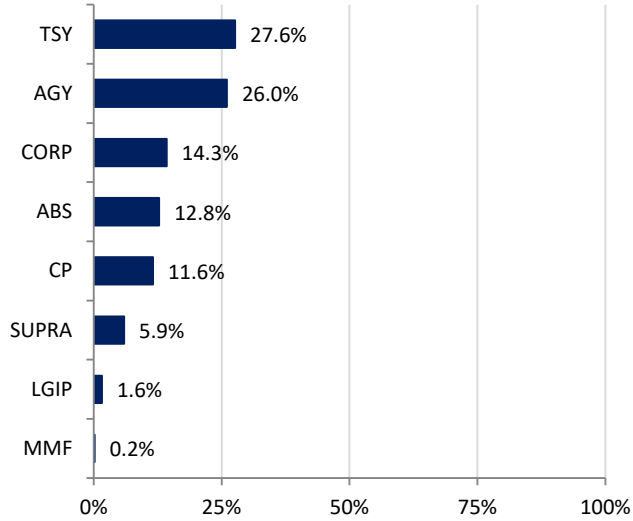


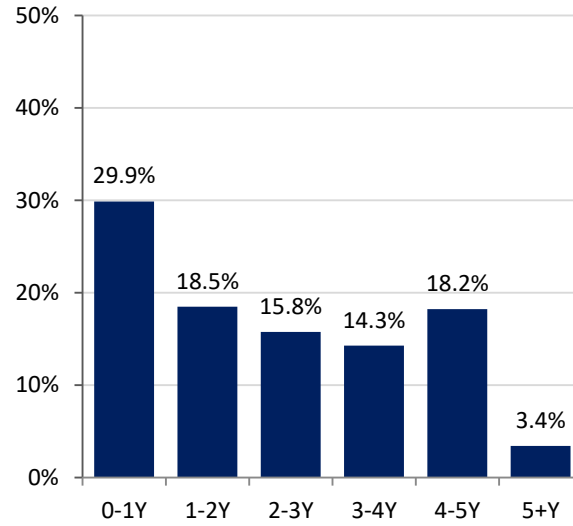
## Las Vegas Valley Water District Portfolio Summary

As of  
12/31/2024

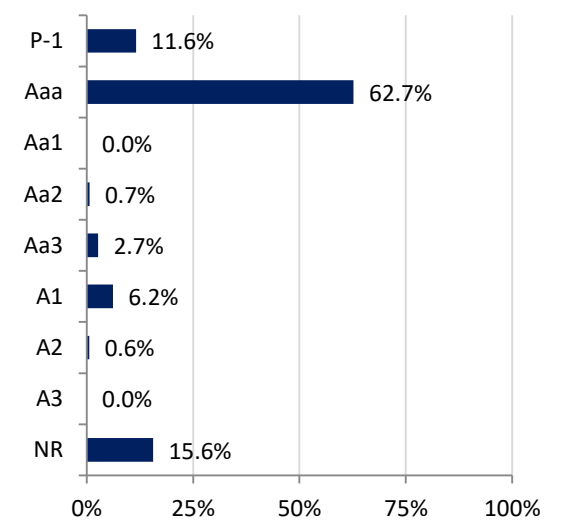
### SECTOR ALLOCATION



### MATURITY DISTRIBUTION



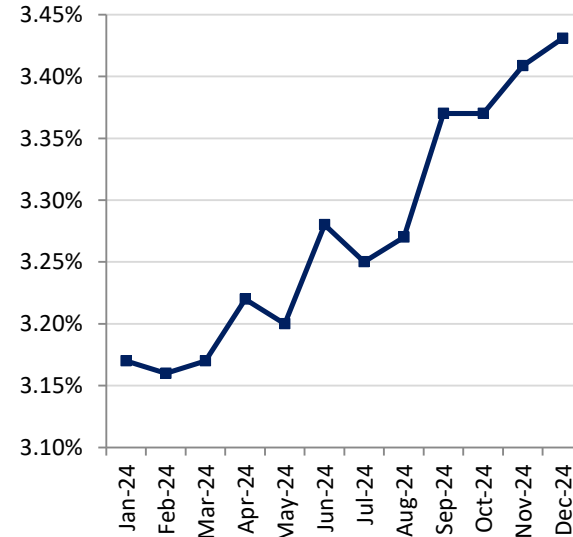
### CREDIT QUALITY (MOODY'S)



### ACCOUNT SUMMARY

	12/31/24	11/30/24
Market Value	\$883,067,909	\$863,684,608
Book Value	\$892,648,312	\$870,795,717
Variance	-\$9,580,403	-\$7,111,109
Par Value	\$900,319,192	\$879,107,164
Book Yield	3.43%	3.41%
Years to Maturity	2.28	2.33
Effective Duration	1.95	2.03
<b>Earnings</b>		
Current Month	\$2,600,081	
Fiscal YTD	\$15,667,666	

### MONTH-END PORTFOLIO BOOK YIELD



### ISSUERS OVER 5%\*

Issuer	% Portfolio
U.S. Treasury	27.6%
FFCB	12.8%

\*Issuers in portfolio that make up more than 5% of portfolio