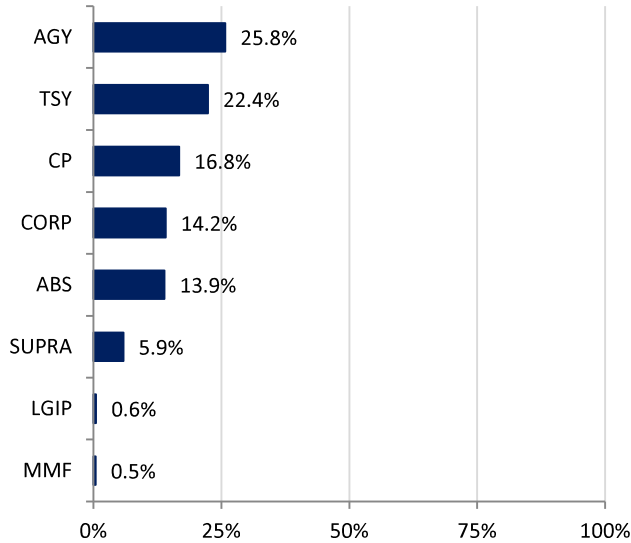


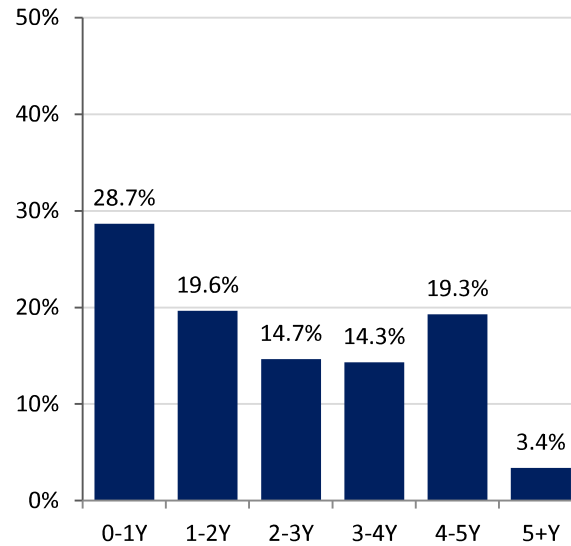
## Las Vegas Valley Water District Portfolio Summary

As of  
1/31/2025

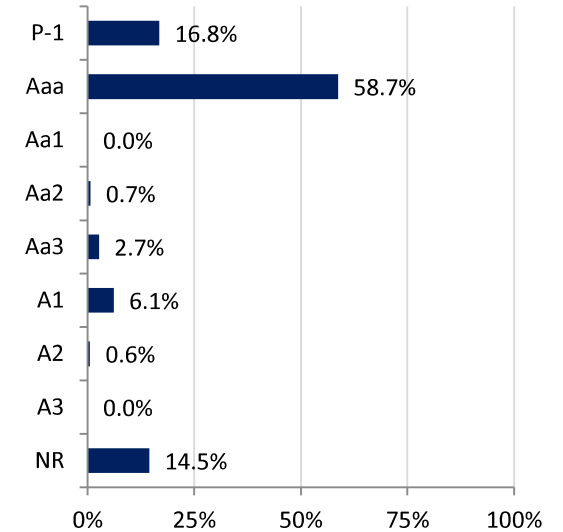
### SECTOR ALLOCATION



### MATURITY DISTRIBUTION



### CREDIT QUALITY (MOODY'S)



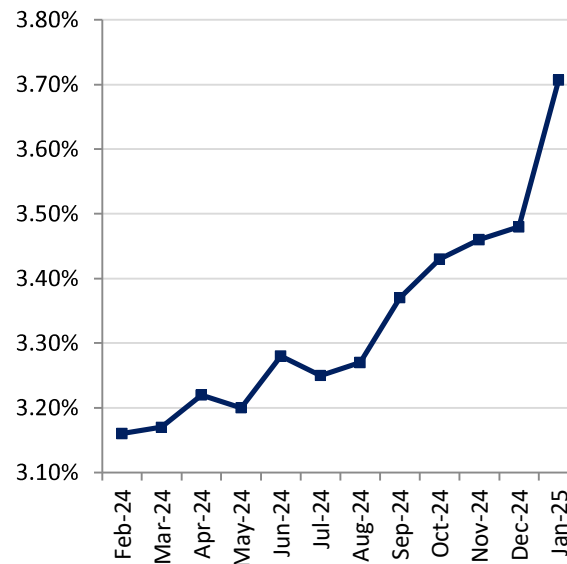
### ACCOUNT SUMMARY

	1/31/25	12/31/24
Market Value	\$892,917,755	\$883,067,909
Book Value	\$900,499,480	\$892,648,312
Variance	-\$7,581,725	-\$9,580,403
Par Value	\$908,175,758	\$900,319,192
Book Yield	3.71%	3.43%
Years to Maturity	2.30	2.28
Effective Duration	1.95	1.95

#### Earnings

Current Month	\$2,196,878
Fiscal YTD	\$17,864,544

### MONTH-END PORTFOLIO BOOK YIELD



### ISSUERS OVER 5%\*

Issuer	% Portfolio
U.S. Treasury	22.4%
FFCB	12.7%

\*Issuers in portfolio that make up more than 5% of portfolio